

WEATHER		Mfn. Max. Precip.
Wednesday, Feb. 8	28	0.14
Thursday, Feb. 9	32	0.08
Friday, Feb. 10	27	0.21
Saturday, Feb. 11	28	0.14
Sunday, Feb. 12	18	0.04
Monday, Feb. 13	15	0.04
Tuesday, Feb. 14	19	0.04

ONE HUNDRED-FIRST YEAR—No. 34

16 Pages This Week

CHELSEA, MICHIGAN, THURSDAY, FEBRUARY 11, 1971

15c per copy

**QUOTE**  
 "And that government of the people, by the people, for the people, shall not perish from the earth."  
 Abraham Lincoln.  
 SUBSCRIPTION: \$4.00 PER YEAR

## Wrestlers Down Good Parma Team Tuesday

Chelsea grapplers took on a good Parma Western team Tuesday evening, and when the wrestling had ended, Chelsea was on top with a 26-20 score. Coach Bareis claimed that the score was so close due to a forfeit 185 pounds.

Mark Montange boosted his record to 20-0 with a second period pin, while Dale Poertner at 105 lost an 8-2 decision. At 114 pounds, Keith Kargel was caught in a pin, and Glen Musolf was defeated, 8-2, at 119 pounds.

Larry Jones then started Chelsea rolling with a 5-2 decision at 126 pounds, and Gary Mon-

tange followed suit with a 5-2 decision win.

Tim Lancaster, in a tough match, finished with a 3-3 draw, leaving Bill Kushmaul to put Chelsea ahead with a pin victory at 145 pounds. At 155 Jon Schenk came through with a 9-5 decision, while Doug McDonald brought the score to 24-13 with a 5-4 decision win. At heavyweight, Rod Branham came up with a 1-1 draw.

In Junior Varsity action, at 98 pounds, Jon Marzec came up with a 4-3 decision win, and Jon Beeman at 105 came through with a pin in the second period. At 112, Steve Seibert followed in Bee-

man's tracks with a second period pin.

Pete Stahl, wrestling at 119 came up with a 5-0 decision victory. At 132 Rick Foytik gained a 4-2 win, while Keith Keiser lost, 8-2. Larry Hopkins, wrestling at 145, came up with a late reversal to gain a 2-2 draw, while Bob Craft, at 155 pounds, came through with a 4-1 decision.

Chelsea will make up the postponed match with Dexter Thursday, tonight, at 7:30. Saturday, Chelsea will travel to the SEC League meet at Dundee, where wrestling will begin at 12:30 p.m.

## Cagers Down Milan in Hectic Double Overtime Contest

Milan's Big Reds came to Bulldog town Saturday evening, Feb. 6, proudly leading the league. But Chelsea's team defeated them 92-81, in an exciting double overtime contest. The victory by the Bulldogs tightened up the league race as the Bulldogs now share the lead with Milan, Dexter, and Ypsilanti Lincoln.

The opening quarter found Milan setting the tempo of the game, employing a tight press. After some early trouble with the press, the Bulldogs adjusted and took the lead. Milan came back and took a 14-13 lead at the end of the period, however.

The second quarter belonged to Chelsea as the fired up Bulldogs

outscored Milan, 26-17, to lead 39-30, at half-time. Howie Treado Jeff Hughes, and Wayne Welton each scored seven points in the period. Jim Wojcicki added five points.

The third period was a reversal of the second, as Milan quickly closed the gap. By the end of the period, Chelsea's lead was trimmed to 54-53, even though Chelsea outscored Milan in the field. The 16 free throws handed Milan provided the difference.

Fourth quarter was nip and tuck, with neither team able to establish a comfortable lead. Shortly before the end of regulation play, Chelsea lost their leading rebounder and second

leading scorer, Ron Sweeny, by the foul route. A late second shot by Milan bounced off the rim and the game was sent into overtime.

Milan quickly jumped ahead in the first overtime, but Wayne Welton kept the Bulldogs in the game with eight points. Todd Sprague added two free throws to give the Bulldogs a three-point lead, but a basket by Milan cut the lead to one point. A Chelsea foul with only one second remaining gave Milan a chance to win the game. Larry Lemerand stepped to the line and bounced the first free throw in to tie the score, 79-79. His second free throw was off course.

The Chelsea defense completely Wojcicki was in the double figure as time ran out.

The second overtime found the Bulldogs taking charge from the opening tip. Howie Treado grabbed the tip and Welton quickly sank the go-ahead basket. Chelsea stole the ball and scored on two free throws by Jeff Hughes. Again the Bulldogs stole the ball, and this time Welton added two more free throws. After another steal by Tom Lixey, Howie Treado added another basket and two free throws.

Milan was led by Clyde Cumbeffuddled Milan as the Big Reds didn't get a shot off until the Bulldogs led by 10 points with only 15 seconds remaining.

The game was an all-out effort by both teams—but Chelsea won. Bulldog scoring was led by Wayne Welton, who had 28 points. Howie Treado added 19 points, and Jeff Hughes tallied 18. Jim Wojcicki was in the double figures again with 14 points. Howie Treado led the rebounding efforts with 21 rebounds, and Ron Sweeny aided with 12 rebounds before fouling out.

Milan was led by Clyde Cummings and Doug Woolard with 20 points each.

The Bulldogs now prepare to meet co-leader of the Southeastern Conference, Ypsilanti Lincoln, at Lincoln High school gym Friday as the league race tightens. (Continued on page three)

## WCC Night School Needs More Students

"After Dinner Education," one of the many local benefits to Chelsea residents, may be foregone in the future if sufficient interest is not shown by persons in the area, officials at Washenaw Community College indicated this past week.

WCC has been offering courses to local residents on an evening basis to those who wish to further their education, but can't attend school during daytime hours.

Classes are convenient to take, meeting one time each week, for several hours, at Chelsea High school, and the course offerings are varied. Virtually any course which sufficient people wanted to take could be offered, Andrew Ford, spokesman for the college indicated.

The present semester commenced Monday evening, Feb. 8, although potential students may register this next week during class-time, Ford said.

Several classes have not yet received sufficient class numbers to continue, according to Ford, and will have to be dropped by

the college. Michigan History, Geography, and the class on government and Society will be scrapped due to poor attendance. On the "tentative" list is the class on Introductory Electricity, which meets Wednesday evenings, and the Blueprint Reading class, which meets Tuesdays.

Classes which will definitely meet this winter include a Children's Literature course, which meets Monday evenings, from 7 to 10 p.m., and Introductory Psychology, meeting Tuesday evenings, 7 to 10 p.m.

Ford said that the college may possibly be considering the establishment of a permanent facility of the college in the western part of the county in the future. Neither the need nor the place for that has been determined at this time, he indicated.

Anyone interested in "expanding his mind," who would like to work toward a college education—in his spare time, is urged to contact Ford, at WCC, or at home. Phone number at the college is 971-6300.

## Girls Track Team Practicing

Winter indoor track season is underway for Coach John Bauer's lady runners at Chelsea High school. Bauer's team traveled to Eastern Michigan University Saturday, Feb. 6, to meet with the Kettering Striders track team from Ohio, and the Wisconsin Track Club.

Bonnie Wengren, star runner on the team, placed third in the 60-yard dash, and second in the quarter mile event.

Janet Sibley placed third in the high jump, jumping 5'7", which her coach describes as "very good" for the first jump of the year.

The coming high school spring season offers four meets for Chelsea's lady runners, with more to be added as the season progresses. May 29 is the date of the State meet, which will be held at Lincoln Park. Bauer claims that his girls have a good chance of winning this meet if the same number of tracksters turn out for the team as did those last year. He has great hopes for this year's team.

Three of the girls on the Chelsea team stand a fine chance of qualifying for the Pan-Am trials which will be held May 1 in Quantico, Va. Bauer claims. Bonnie Wengren, Janet Sibley, and Peggy Kraai are within sufficient distance of qualifying for these trial races which will select women to participate in the Pan-American games to be held in Colombia, S. A., in August. If they place in the first three places in the Pan-Am trials, they will be admitted to the team, and their

trip to South America will be sponsored by the Amateur Athletic Union, Bauer claims.

Of Chelsea's tracksters, Janet Sibley, high jumper, has what Bauer claims is the best chance to make the Pan-Am trials. To qualify for this competition, she must jump a minimum 5'4". Janet jumped this height last year, but she must do so again, this year, to qualify.

Bonnie Wengren must run the 440-yard run in a time of 56.3 seconds. Her coach claims that she is close to this level now, and with additional training he hopes to see her qualify early this spring.

Peggy Kraai, who competes in the 100-meter hurdles event, must

## Douglas Brown, Jr. Will Receive Navy Citation Saturday

Douglas E. Brown, Jr., 1280 Sugar Loaf Lake, will receive the Navy Achievement Medal with Combat Valor and Citation Saturday, Feb. 13, at 12:30 in Lansing.

Brown was discharged from the United States Marine Corps in October following an 18 month tour of duty, which took him to Vietnam, for 10 months. He received the Vietnamese Service Award, and the Bronze Star while serving in Vietnam.

run that event in 14.4 seconds. This will take work, Bauer said, but her ability is there.

Deadline for qualifications for the Pan-Am trials is April 24. Three outdoor meets have been scheduled prior to that time, Bauer said, in which the girls will have an opportunity to qualify.

Among the up-coming events for the female roadrunners at Chelsea is a meet with Lincoln Park at Lincoln Park. According to Bauer, Lincoln Park has the best team in Michigan. Most of the girls on that team have run on the defending U.S. Girls and Women's Cross Country Championship team for the past two years. Bauer said that this year's Chelsea team should be strong enough to beat them, if those who ran last year turn out for spring training this year.

A training booklet compiled by Bauer is ready to be sold across the country in another week. This training manual is an exercise program he experimented with last summer, with very good results. His girls improved at a rapid rate, he claims, and are still improving following this training. Interest in the program has been shown by olympic runners, U.S. champions, and every athlete who comes in contact with Bauer and his troop of runners. The coach explained that some of the proceeds of his manual will be used to help defray expenses for his team when they travel to the Pan-Am trials, and the Outdoor AAU Championships which will be held in Urbana, Ill., over the Fourth of July week-end.



SENIOR HIGH SOLOISTS receiving "I" ratings Saturday, Feb. 6, at the District Solo and Ensemble Festival at Schoolcraft were from left, Karlene Kargel, Sue Rasmussen, Chris Rasmussen, Kathryn Schaefer, and Jeff Parsons. Karlene took first place with a clarinet solo, while the Rasmussen

sisters took first-place ratings with flute, and oboe solos. Kathryn Schaefer plays baritone, and Parsons, trumpet. Soloists and ensembles with a rating in the first division will compete in the state Solo and Ensemble Festival held Saturday, March 27 at Kellogg Community College in Battle Creek.



BRASS SEXTET WINS: Five of the six members of the "Brass Sextet" to receive a "I" rating at the District Solo and Ensemble Festival were, from left, Melvin Buss, baritone; Jon Schenk,

cornet; Kathryn Schaefer, French horn; Bob Wojcicki, cornet; and Bill Schaefer. Missing is Chris Marzec, tuba. The group played a piece called "Fantasy Sketch," by Smutz.

## CHS Soloists, Ensembles Rated Tops at District Meet

Twenty-seven Chelsea High school band students traveled to Schoolcraft Community College in Livonia, Saturday, Feb. 6, to compete with other area schools in the District Solo and Ensemble Festival. In what band director Warren Mayer termed a better performance from the previous week's band showings, five Chelsea soloists and two ensembles placed in the number one column for their efforts.

Rated "I" were soloists Chris Rasmussen, who played oboe, and Sue Rasmussen, flute; Karlene Kargel, clarinet; Kathryn Schaefer, trumpet; and Jeff Parsons, trumpet. These students are now eligible to enter the State Solo and Ensemble Contest which will be held March 27 at Kellogg Community College in Battle Creek.

Two ensembles will accompany the soloists when they compete in Battle Creek. Winners of a number "I" rating were members of a brass sextet, Bob Wojcicki, Jon Schenk, Kathryn Schaefer, Melvin

Buss, Bill Schaefer, and Chris Marzec, and a clarinet quartet of Darlene Beeman, Phyllis Buss, Patty Young and Janice Schenk.

Three entries rated "II" in Saturday's competition, one soloist, and two ensembles. Soloist Margie Parsons, clarinet, placed in the second division, along with

a saxophone quartet composed of Dale Robbins, Gary Collins, Ric Foytik, and Steve Smith. Also placing in the second division were Sue Rasmussen, Douglas Vangor, Karlene Kargel, Jim Storey, and Cindy Chandler, who made up a woodwind quintet.

With a third division rating were two soloists, and one ensemble. Randy Young, playing a cornet solo, and Lee Ferguson, trombone, placed in this category, along with a tenor saxophone duet of Chuck Foytik and Larry Doll. Also with a third division rating was a flute duet played by Diane Robbins and Debbie Clouse.

Bus left the Chelsea high school parking lot at 6:30 a.m. for the event, which lasted most of the day, Mayer said.

Chaperones to Saturday's Festival were Mrs. Ray Parson, Mrs. James Robbins and Mrs. Robert Schaefer. Mrs. Rasmussen and Cindy Reynolds accompanied for the Chelsea groups.

For the Junior High school festival, chaperones included Mrs. Merle Leach, Mrs. Betty Eder, Mrs. Richard Jennings, Mrs. Tom Morrison, Mrs. Jerald Heydlauff, and Mrs. James Schardein.

Up-coming band events include a winter band concert to be held at 8 p.m., Monday evening, Feb. 15 in the Chelsea High school auditorium.

First on the program will be the concert band, under the direction of Stuart Glazer. Following intermission, the symphony band will perform under the direction of Warren Mayer.

## National Merit Scholarship Tests Slated

Qualifying examinations for the National Merit Scholarship will be administered to Chelsea High school juniors Tuesday, Feb. 16, according to George Bergman high school counselor. Registration deadline for the exam is Monday, Feb. 15. A national fee of \$1.25 will be charged to take the test.

Scores on this test will be used to determine winners in the National Merit Scholarship competition.

ACT tests, American College Testing, will be administered to all who have pre-registered on Saturday, Feb. 20, Bergman added. Registration deadline for this test is past.

In other career planning activities, Bergman said that a representative from IT&T, one of the nation's largest corporate structures, will come to Chelsea High school, Thursday afternoon, Feb. 18. He will address those who are interested in automotive, air conditioning and heating, engineering, and drafting, machine tool, tool and die, electronics, industrial tool engine, architectural design, tool design and auto-diesel mechanics careers. This talk will commence at 1 p.m. Meeting place will be released later, Bergman indicated.

## Rockwell Plant Workers Ratify New Contract

### New Three-Year Contract Follows Pattern of Big Three Auto Unions

Striking workers at the North American Rockwell plant returned to work Monday morning, following ratification of a three-year local and national contract on Sunday.

About 150 workers were involved in the four-day strike at NAR, which was a strike in support of a national contract settlement between the company and the United Automobile Workers Amalgamated.

The strike was called Tuesday morning, Feb. 2, when contract talks broke down at midnight Monday.

Eight plants in the Commercial Products Group of North American Rockwell were affected by the strike.

Harold Salzer, Local 437 president, said that union members ratified the contract unanimously.

ly. He said the union will receive approximately the same benefits the Big Three auto motive unions did.

Benefits of the new contract include raising the average auto worker's wages of \$1 an hour over the next three years, which means that average production employee's wages will be hiked to between \$12,000 and \$13,000 a year by 1973.

Also included in the contract are provisions for retirement at age 58 with a \$500 per month pension after 30 years service and unlimited wage increases tied to the cost of living.

Plant manager at the Chelsea NAR plant is Robert Rudd, while Don Baldwin is assistant plant manager, contrary to an article covering the strike printed in last week's issue of The Standard.

## Wins Homemaker Title

Dorothy Kay Gauss, daughter of Mr. and Mrs. Ernest Gauss, 247 Washington St., has been named the Betty Crocker Homemaker of Tomorrow for Chelsea High school. She was chosen on the basis of her score in a Dec. 1 test for which 650,000 senior girls were enrolled throughout the country. From General Mills, sponsor of the annual education program, she will receive a specially designed award. Additionally, her selection makes her eligible for state and national honors, including one of the 102 college scholarships totaling \$110,000.

Dorothy, a senior at Chelsea, works as a waitress at the Chelsea Mediscent in her spare time. A good student, she is a member of National Honor Society. She is a member of St. Paul United Church of Christ, and of St. Paul Youth Group. Her career ambitions include going to college at Michigan State University, where she has been accepted. She plans to major in Home Economics with an eye towards teaching.

National winner of the 1971 Betty Crocker All-American Homemaker of Tomorrow will be selected this spring from 51 senior girls representing each state and the District of Columbia during an expense-paid educational tour of Washington, D. C. and Colonial Williamsburg, Va. State winners will be announced at a prior date, not yet available. (Continued on page three)



DOROTHY KAY GAUSS

## Area Pastor Dies in Crash Near Jackson

The Rev. Frederick A. Atkinson, 67, 6720 Bourne St., Gregory, was killed Thursday afternoon, Feb. 4, when the vehicle he was driving on US-127 in Jackson lost control, and collided with a truck, loaded with 60,000 pounds of freight.

Atkinson was heading north at the time, Sheriff's deputies said, when his Volkswagen skidded on the rain slicked highway and rammed into a bridge railing.

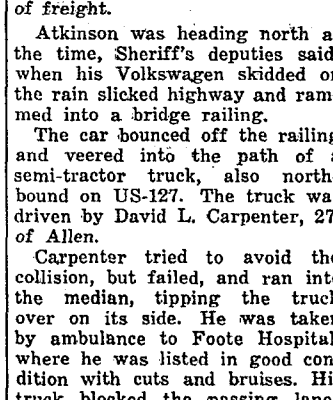
The car bounced off the railing and veered into the path of a semi-tractor truck, also northbound on US-127. The truck was driven by David L. Carpenter, 27, of Allen.

Carpenter tried to avoid the collision, but failed, and ran into the median, tipping the truck over on its side. He was taken by ambulance to Foote Hospital, where he was listed in good condition with cuts and bruises. His truck blocked the passing lanes of both north and south-bound sections of the highway for nearly four hours, officials claimed.

The Rev. Atkinson was the pastor of the North Lake United Methodist church and the Salem Grove Methodist church. A camera-man lithographer by trade, he entered the ministry six years ago, and served in four churches in southern Illinois before coming to Chelsea in the fall of 1969.

St. Louis School Basketball Team Plays at Crisler Arena

Saturday afternoon, Feb. 6, through the courtesy of Don Canham, University of Michigan athletic director, the basketball team of St. Louis school was invited to attend the Michigan-Northwestern game at Crisler Arena in Ann Arbor. During the half-time, the boys had the opportunity to play an exhibition basketball game. Their opponents were St. Francis. Score was tied 8-8. It was a memorable experience for both schools. The day was topped off by Michigan's victory over Northwestern, 82-81.



KATHLEEN A. SUTTER

## Commissioned 2nd Lieutenant In Air Force

Kathleen A. Sutter, daughter of Dr. and Mrs. Edwin J. Sutter, 564 McKinley St., has been commissioned a second lieutenant in the U.S. Air Force upon graduation from Officer Training School at Lackland AFB, Tex. Miss Sutter enlisted in the Air Force Oct., 1970, graduating as a second lieutenant on Jan. 6. She is being assigned to Keesler AFB, Miss., for training as a communications maintenance officer.

Lieutenant Sutter is a graduate of Chelsea High school. She received her BA degree from Northern Michigan University in 1969. Prior to her enlistment, she was a graduate assistant at Southern Illinois University, working on her master's degree. Miss Sutter's present training will last 32 weeks, after which she will be re-assigned.





## Washington Report

by Congressman

MARVIN L. ESCH

Any way you look at it this Congress will soon do what the last one should have—pass an increase in social security benefits.

Some members of Congress, especially those who sit on the Senate Finance Committee should have a guilt complex over what happened last year to social security. It was in the hectic days of the last session that the Senate Finance Committee conceived the notion to tack onto the social security measure some of the session's most hotly contested items. One of them was the horrendous trade bill which, if enacted, would have touched off a bitter dispute between America and her trading partners. Fortunately for this country's foreign relations that move failed. Unfortunately for the elderly, however, the tactics of a few Senators resulted in unnecessary confusion and delays with no social security hike forthcoming.

Had the Senate followed the lead of the House which passed a bill nearly a year ago, those living on social security payments would already be getting a fatter check. Enough history—what about the future?

I have written the chairman of the House Ways and Means Committee, where action will originate, urging immediate hearings. The chairman has sent word that he is for early hearings on a new bill. This is an encouraging sign. I might add I have some very

strong feelings on what the content of that legislation should be. First, automatic cost of living increases. They are necessary and what happened in the Senate is a clear illustration of why they should be written into the law. It is sheer nonsense that our senior citizens should be at the mercy of political demagogues.

Second, when we raise the benefits they ought to be retroactive to Jan. 1.

Third, a boost of 10 percent is warranted, particularly with the upward trend in the cost of living. Fourth, I favor an end to the earnings limitation. This would in my opinion be one of the most helpful steps that Congress could take to really be of assistance, so that those who wanted to keep working would not be penalized.

Aside from a hike in social security payments, Congress could move expeditiously in this session on other matters that effect our senior citizens. One of course will be considering health legislation, and here the age will benefit. In addition, Congress, which has up to now failed to launch a comprehensive attack on the problems of the elderly has another chance to get a program moving.

A Congress that passes progressive legislation of this type will go down in history as one that has taken constructive steps to solve the great difficulties this segment of our society faces.

## Uncle Lew from Lima Says:

### DEAR MISTER EDITOR:

Zeko Grubb's preaching stopped by the store Saturday night, and he gave the fellows a preview of his Sunday sermon. He said he was going to talk on the state of the nation, which he allowed was constant confusion. He said the hole country is like wimmen. Wimmen is allus confused, the preacher said, cause they can't never make up their minds. I didn't say, but that struck me as a powerful good reason. Anyhow, Mister Editor, he quoted some Scripture about honoring and obeying, and how wimmen down deep want their men to boss em around.

Not being a woman, I couldn't argue about their reasons, but all the fellows was general agreed about the state of confusion. I think the real reason wimmen get confused is that they want to go dressed and undressed at the same time. For instance, I see where long pants is being wore in place of them no-skirt skirts, but now wimmen is leaving their middle naked and the men is talking about how sexy the belly button is. It looks like wimmen is just taking turns covering up and uncovering different places.

### MARKET Report for Feb. 8

#### CATTLE—

##### Steers and Heifers:

Choice, \$30 to \$38.50.

Good, \$28 to \$30.

Ut.-Std., \$22 to \$26.

Fed Holsteins, \$24 to \$28.50.

##### Cows:

Heifers, \$24 to \$26.

Ut.-Comm., \$21 to \$24.

Canner-Cutters, \$18 to \$21.

Fat Yellow Cows, \$19 to \$22.

##### Bulls:

Heavy, \$26 to \$29.

Light and Common, \$22-\$26.

##### Calves:

Prime, \$48 to \$52.

Good-Choice, \$42 to \$48.

Good-Med., \$25 to \$32.

Heavy Deacons, \$35 to \$40.

Light Deacons, \$30 to \$36.

##### Feeders:

Good-Choice, \$28 to \$36.50.

Common-Med., \$23 to \$28.

Dairy Cows, \$28 to \$38.50.

##### HOGS—

##### Butchers:

190-lb. to 240-lb., No. 1, \$20.50 to \$21.80.

190-lb. to 240-lb., No. 2, \$19 to \$20.50.

240-lb. and up, \$16 to \$19.

##### Sows:

Fancy Light, \$16 to \$17.

300-lb. to 500-lb., \$15 to \$16.

500-lb. and up, \$14 to \$15.

##### Pigs and Stags:

All Weights, \$14 to \$18.

##### Feeder Pigs:

Per Head, \$9 to \$14.

##### SHEEP—

##### Wooled Slaughter Lambs:

Choice-Prime, \$24 to \$26.

Good-Util., \$21 to \$24.

##### Ewes:

Slaughter, \$6.50 to \$8.50.

##### Feeder Lambs:

All Weights, \$21 to \$24.50.

##### Howell Livestock Auction

The Wise Owl Says Ship to Howell

SALE EVERY MONDAY, 2 p.m.

Phone 546-2470, Bill Franklin

Meats 677-8941

Established 1871

The Chelsea Standard

Excellence Award By Michigan Press Association

1951-1952-1960-1964-1965-1966

Walter P. Leonard, Editor and Publisher

Published every Thursday morning at 800 North Main

Street, Chelsea, Mich. 48118, and second class postage paid

at Chelsea, Mich., under the Act of March 3, 1879.

ADDRESS CORRECTION REQUESTED

Subscription Rates (Payable in Advance)

In Michigan: One Year \$4.00

Six Months \$2.25

Single Copies \$ .15

Outside Michigan: One Year \$6.00

Six Months \$3.50

Single Copies \$ .20

Service men or women, anywhere, 1 year \$4.00

MEMBER

NATIONAL ADVERTISING REPRESENTATIVE

MICHIGAN NEWSPAPERS, INC.

257 Michigan Ave.

East Lansing, Mich. 48823

Association, Founded 1885



## MICHIGAN MIRROR

By Elmer E. White, Secretary, Michigan Press Association

### New Angles for Alcohol

Drunk driving is getting more attention. Michigan's Department of Public Health is spearheading a new attack on the growing problem.

The project, being conducted in co-operation with federal authorities, will set up alternatives for punishments such as fines, jail sentences and license revocations. Instead of these, a drunk driver may be referred into educational channels, with a comprehensive followup.

The department says it is participating in the project because statistics show that despite the punishments now being meted out, large numbers of drinking drivers continue to drive while they are drunk.

Severity of the problem is shown in statistics from the year 1969, in which 56,400 persons lost their lives in highway fatalities in the United States.

Of that total, more than 30,000 of the fatalities occurred in accidents in which drinking was involved. And about 20,000 of the deaths involved drivers with previous drunk driving records and what the department calls "excessively" high blood-alcohol counts.

For the same year, Michigan recorded 2,487 fatalities, which means that well over 1,200 persons died here that year in accidents involving a drinking driver.

In addition, the Governor's task force on drinking drivers reports that in the entire 331,223 motor vehicle accidents reported in Michigan that year, "the most common single factor consistently identified" was the presence of alcohol in the bloodstream of at least one of the drivers involved.

The new project will cost more than \$180,000 over a nine-month period and will be run at the local level.

Thus far, arrangements for conducting of such a program have been completed with local health departments in Kalamazoo, Kent, Muskegon, Oakland and Macomb counties.

The center operating element will be alcohol information class-

es for all drunk driving offenders," explains program co-ordinator John T. McConnell. "These will give an opportunity to identify the people who need comprehensive help for actual alcoholism."

"They'll be referred to the appropriate treatment and rehabilitation channels," he said.

To get the program on a working basis, operators of it will have to work out agreements with local courts and law enforcement officials in setting up procedures for automatically referring drunk drivers to the project.

In addition, they hope to educate the community as a whole about

the nature of the drunk driving problem and about what the community can do about it.

And, finally, McConnell says, "The project will give us a chance to develop a realistic profile, a genuine description of just who are the high risk drinking drivers so that ultimately, we may be able to get at them before, instead of after, they hurt or kill someone on the highway."

Savings Soar in 70

Despite the sluggishness of the economy and the two-month long General Motors strike, Michigan savings and loan association did a land office business during 1970.

The Michigan Savings and Loan League says the total savings in its 68 member institutions grew by \$480 million during the year, surpassing the previous record set back in 1963 by 62 percent.

At the same time its members loaned more than \$700 million, all a record high. The previous high was \$633 million set in 1968.

The league also saw the first loan by a savings and loan association for a mobile home and league spokesman Donald F. Wall says he expects "this type of lending will increase each year for some time in the future."

Despite the rises, however, the league says there still are problems facing the construction of new housing in the state and Wall says "We need a national commitment to end inflation if this country's citizens are to be properly housed."

Although he admitted Tuesday evening, that he had not yet been officially informed of his bid acceptance, he had received the news informally. He expects to move the building to a new location within the next 60 days, as terms of the bid dictate. Purchase price was \$1,066 for the structure only.

The new owner of the hall says he will probably fix it up as a home and rent it. He purchased a schoolhouse in which he once attended grade school back in 1959 or so, and that structure has now been converted into a residence which Esch now rents.

Esch says he plans to move the former township hall to a site on the south side of North Territorial Rd., a short distance west of the residence of Mrs. Camille McLean.

The township hall, landmark of township government for a number of years, has a new owner. Walter Esch of Ann Arbor, who formerly resided on Dexter-Pinecroft Rd., was named as the successful bidder for the structure at the meeting of the Dexter Township Board on Feb. 2, explained township clerk Bill Eisenbeiser.

Esch says he plans to move the former township hall to a site on the south side of North Territorial Rd., a short distance west of the residence of Mrs. Camille McLean.

The township hall, landmark of township government for a number of years, has a new owner. Walter Esch of Ann Arbor, who formerly resided on Dexter-Pinecroft Rd., was named as the successful bidder for the structure at the meeting of the Dexter Township Board on Feb. 2, explained township clerk Bill Eisenbeiser.

Esch says he plans to move the former township hall to a site on the south side of North Territorial Rd., a short distance west of the residence of Mrs. Camille McLean.

The township hall, landmark of township government for a number of years, has a new owner. Walter Esch of Ann Arbor, who formerly resided on Dexter-Pinecroft Rd., was named as the successful bidder for the structure at the meeting of the Dexter Township Board on Feb. 2, explained township clerk Bill Eisenbeiser.

Esch says he plans to move the former township hall to a site on the south side of North Territorial Rd., a short distance west of the residence of Mrs. Camille McLean.

The township hall, landmark of township government for a number of years, has a new owner. Walter Esch of Ann Arbor, who formerly resided on Dexter-Pinecroft Rd., was named as the successful bidder for the structure at the meeting of the Dexter Township Board on Feb. 2, explained township clerk Bill Eisenbeiser.

Esch says he plans to move the former township hall to a site on the south side of North Territorial Rd., a short distance west of the residence of Mrs. Camille McLean.

The township hall, landmark of township government for a number of years, has a new owner. Walter Esch of Ann Arbor, who formerly resided on Dexter-Pinecroft Rd., was named as the successful bidder for the structure at the meeting of the Dexter Township Board on Feb. 2, explained township clerk Bill Eisenbeiser.

Esch says he plans to move the former township hall to a site on the south side of North Territorial Rd., a short distance west of the residence of Mrs. Camille McLean.

The township hall, landmark of township government for a number of years, has a new owner. Walter Esch of Ann Arbor, who formerly resided on Dexter-Pinecroft Rd., was named as the successful bidder for the structure at the meeting of the Dexter Township Board on Feb. 2, explained township clerk Bill Eisenbeiser.

Esch says he plans to move the former township hall to a site on the south side of North Territorial Rd., a short distance west of the residence of Mrs. Camille McLean.

The township hall, landmark of township government for a number of years, has a new owner. Walter Esch of Ann Arbor, who formerly resided on Dexter-Pinecroft Rd., was named as the successful bidder for the structure at the meeting of the Dexter Township Board on Feb. 2, explained township clerk Bill Eisenbeiser.

## JUST REMINISCING

Items Taken from the Files of The Chelsea Standard

### 4 Years Ago . . .

Thursday, Feb. 16, 1967—

Five members of the Chelsea High school bands will take instruments in hand this week-end and travel to Ithaca to participate in the state All Stars Band. Susie Knickerbocker, clarinet, Mike Funderburgh, trumpet, Ralph Johnson, tuba, and Russell Mower, trombone, will attend the event, which will feature a concert to be directed by Leonard Falcone, Michigan State University band director.

A quickly organized Chelsea team took first place in parliamentary procedure at the Future Farmers of America district contests held at Dexter on Feb. 9. The team will now represent District II in the regional contests to be held at Hillsdale, Feb. 23. Members of the winning team, according to Chelsea high's new agriculture teacher, Arthur Dodd, were Loren Heller, Ron Bolinger, John Hafner, Ron Montange, Rod Powers, and Jerry Kuhl. The Chelsea chapter was re-activated at the end of January when Dodd joined the faculty for the second semester.

Twenty-three band members from Chelsea High school earned top rating at the Senior High solo and ensemble festival held last Saturday at Eastern Michigan University. A rating of I was given to Lynn Ferguson, Mike Funderburgh, Heidi Sprague, Karen Lehman, Sarah Lindauer, Pat Gilbert, Sandy Knoll, Gail Maistre, Marti Skodak, Debbie Kuhl, Sarah Storey, Kathy Fulk, Tim Meininger, Russ Maurer and John Collins for their efforts.

### 14 Years Ago . . .

Thursday, Feb. 14, 1957—

Chelsea High school's reserve basketball squad featured such sure shots as Donald Ferguson, Norman Hiltz, Olen Hart, Robert Weiss, Donald Wood, Fritz Wagner, Robert Eder, Earl Heller, Matt Murphy, Jack Patrick, George Wilson, Roger Herman, Charles Koenigster, James Collins, Charles Cameron, Fred Patterson, and Robert Smith. Allan Conklin coached the team.

The first triplets ever to be born to Chelsea parents will be four years old on Monday, Feb. 18. Stephen, George, Patrick, Craig, and Molly Maureen are the youngest children of the Dudley Foster family. Mrs. Foster is the former Angeline Burg, daughter of Mr. and Mrs. J. V. Burg. Other family members include Michael, Diann, Scott and Kathy.

Bigger fish may have been taken from near-by lakes this winter, but none made a fisherman any happier than the 29 inch, 6 1/2 pound walleyed pike. Ralph Guenther speared through a hole in the ice on Crooked Lake at about 5 p.m. Friday afternoon.

Last week, Kenneth Livingston reported spearing an 8 1/2 pound Northern Pike on Mill Lake, and a Grass Lake fisherman, Earl Kalmbach, took one weighing 9 1/2 pounds on the same lake.

Carroll Heath and Ronald Bohl were the lucky hunters who took top honors at the Chelsea Rod and Gun Club sponsored Fox Hunt held in the Sharon Hollow area. Other clubs who helped stage the hunt included the Detroit Outdoorsmen, Jackson Outdoorsmen, Jackson Outdoors and Cooley High school Conservation Clubs. Also participating in the hunt were local farmers. Eight foxes were spotted, two killed in the day long hunt. After the hunt, they gathered at Lyndon Town Hall for a mulligan stew prepared by Mrs. L. D. Guinan and Mrs. Orson Beeman and daughters.

### 24 Years Ago . . .

Thursday, Feb. 13, 1947—

Mr. and Mrs. Melvin Lesser have purchased the entire stock of men's women's, and children's clothing and footwear from Don Martin's Gamble Store and will conduct an independent business under the name of Lesser's Department Store in the building immediately next to Hinderer Bros. store, which has been a part of the Gamble store.

James Bradbury has been selected as inseminator-manager for the Michigan Artificial Breeding Association. Local chairman for the group is Everett Van Riper, while Robert Gilbert is vice-president. F. P. Fowler is secretary-treasurer, while Lowell Spike is state representative. Other directors include Vincent Ives, Clifford Bradbury, and Jack Bradbury.

After 28 years of publication under the direction of the present publishers, Mr. and Mrs. M. W. McClure, The Chelsea Standard is changing ownership, effective on

April 1. The new publishers, Mr. and Mrs. Walter P. Leonard, of Ann Arbor, are bringing into the business a well-rounded experience in the newspaper and printing industry.

The girls basketball team of Saline played here Tuesday, Feb. 4. The line-up for Chelsea was as follows: forwards were H. Hanker, N. Gordon and W. Paul, guards; P. Schaible, J. Weir, and B. Luick. Substitutes for the second half were forwards, J. Hughes, Mary A. Schrader, and D. Howard. Guards were C. Miller, Mary K. Palmer, and Myrna Robards. Saline failed to rally in the last half and only made two points. The final score was 21-10 in Chelsea's favor.

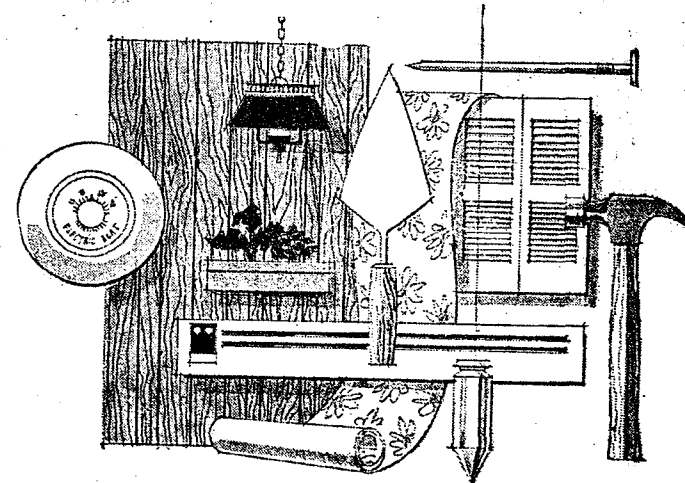
### 34 Years Ago . . .

Thursday, Feb. 11, 1937—

Candidates for the village offices to be voted upon at the annual election will be named at a caucus to be held at Sylvan Town Hall on Tuesday evening, Feb. 16. Candidates to be named Tuesday include president, clerk, treasurer, assessor, and three trustees. Roy Harris is now president; James Munro, clerk; Ed Miller, treasurer, and Ed Keusch, assessor. Trustees whose terms do not expire until next year are F. W. Merkel, Conrad Lehman, and Wilbur Hinderer. Trustees whose terms do expire this year are H. B. Murphy, J. E. Weber, and Ernest Asam.

"Drums of Doom," a German film drama banned by Hitler, is among the talking pictures scheduled to be shown at the Chelsea High school on Tuesday, Feb. 16, at 8 p.m. This program is sponsored by the Chelsea Kiwanis Club and Emergency Peace Campaign as a part of its nation-wide, two-year program to keep the United States from going to war. Dr. Francis S. Onderdonk of Ann Arbor will show the films.

**VALENTINE DANCE**  
**SATURDAY, FEB. 13**  
**Dexter American Legion Home**  
**MEMBERS and GUESTS**  
**LIVE MUSIC and LUNCH**  
**\$2.00 per person**



If you plan on building or remodeling...  
plan on modern **ELECTRIC HEAT**

When you build a new home or add on a new room, you naturally want everything to be new, clean and modern. That's why you should insist on flameless, electric home heating—the truly modern kind of heat. It's quiet, trouble-free, as clean as electric light itself. And it can give you that wonderful exclusive feature—individual room temperature control.

An Edison-Approved Electric Heating Contractor will be glad to tell you all about comfortable, moisture-retaining electric heat. He'll figure your operating cost, and there'll be no obligation. Call him for an electric heat survey, or mail the coupon below.

**EDISON** 180 Service Building

2000 Third Detroit, Michigan 48226

☐ I'm still nervous about the cost. Send me the money.

☐ Don't want to talk to anyone. Just send literature 91C.

Name \_\_\_\_\_

Address \_\_\_\_\_

City \_\_\_\_\_ State \_\_\_\_\_

Zip \_\_\_\_\_ Phone \_\_\_\_\_



Dial your long distance calls direct and get somewhere the easy way.

Just dial 1, the area code (if different from your own), then the phone number, and you'll go a long way. Fast.

Dial your long distance calls direct. And get out of town, on time.



## JV Win Streak Snapped

Chelsea Junior Varsity roundballers saw their three-game winning streak stopped this past week as they were defeated Saturday night, by Milan, 62-72.

Although the Bullpups dropped behind by 10 points in the first quarter, they managed to lead by two points at the end of the half thanks to a seven for 20 effort from the floor in the second period.

Chelsea's cagers held their own in the third stanza, but still found themselves trailing by one point, 50-51, at the end.

For a time it seemed as though the JV's might avenge an early season loss to the Big Reds in the fourth quarter, but Milan's height proved to be too much as

Chelsea was outscored by a 21 to 12 margin.

Chelsea was led in the scoring column by Bruce Guster who tallied 20 points, while assisting on six other baskets. Guster was followed by Mark Policht who netted 17 pointers and Tim Van-Slambronek who hit on six of 11 shots from the floor for 12 points.

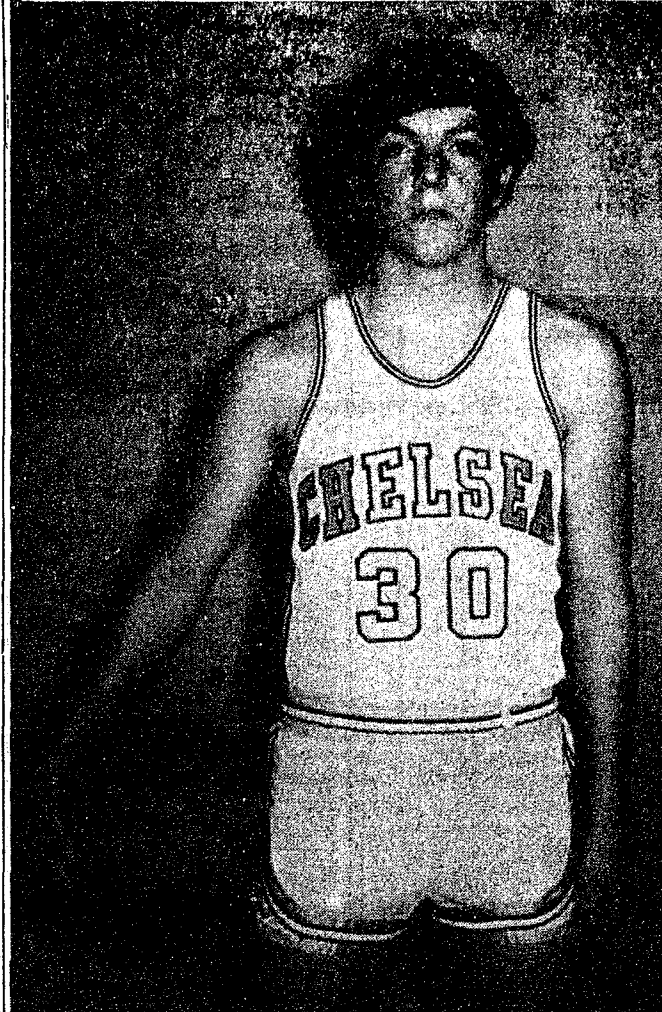
John Mann and Dan Bertke scored eight and five points, respectively.

Bertke and Tim Treado each grabbed 10 rebounds to top the Chelsea board effort.

Chelsea's Junior Varsity team record now stands at 5 wins and 3 losses in conference play, and 6 wins, 6 losses in over-all action.

Bullpups travel to Lincoln Friday, and then will play South Lyon Saturday night. It will be the second game of the season against both teams. Chelsea de-

## Cager of the Week



TOM LIXEY, Bulldog forward, is a junior on the team. Lixey is completing his first year on the Chelsea roundball team this year, although this is his third year as a Chelsea cager. Lixey is a member of the football team, where he plays defensive end, and he enjoys such sports as baseball and golf. He has worked for Staffan Funeral Home for a number of years, on a part-time basis, doing maintenance work. Tom is presently undecided concerning his career interests. He lives at home with his parents, Mr. and Mrs. Harvey Lixey, 710 S. Main. He has two brothers, and one sister, none of whom live at home. Dave is a teacher in Southgate, while John is a student at Eastern Michigan University. His sister Barbara works in Ann Arbor.

### Chelsea Boys Find Bag of Marijuana

Two sharp-eyed Chelsea youths have turned over to Sheriff's deputies a bag of marijuana, they said they saw being hidden near a Lima township intersection. The boys, 12 and 13 years of age, were walking along S. Freer Rd., near Jackson Rd., when they saw a car stop near the intersection. They said they watched wh-

le a tall youth got out of the vehicle, placed the bag at the base of a traffic sign and covered it with snow. The youth then got back in the car and drove off. The boys went to the sign, dug up the bag and called Sheriff's deputies. Officers said "a" field test made on the material verified that it was marijuana.

## Frosh Cagers Down S. Lyon For 9th Win

Chelsea's freshman basketball team rolled to their ninth victory of the season Tuesday night by downing South Lyon, 40-32.

The first half was rather slow, for both teams. About midway through the second quarter, however, Chelsea started to pick up and moved out to score a seven point lead.

From that point, and throughout the entire second half, it was all Chelsea, as the Bulldogs scored 16 points in the third quarter, and 13 in the fourth. For the entire fourth quarter, and some of the third, the reserves were called upon to do the job. And they did an excellent job, Coach Tallmar proclaimed.

High scorers for Chelsea were Marv Guster, with 16 points, Rick Miller, with 11, John Houle, with five, John Tandy, with five, and Dave Launon who had four.

Leading the way in rebounding was Rick Miller, with 18 caroms and Jeff Marshall with seven.

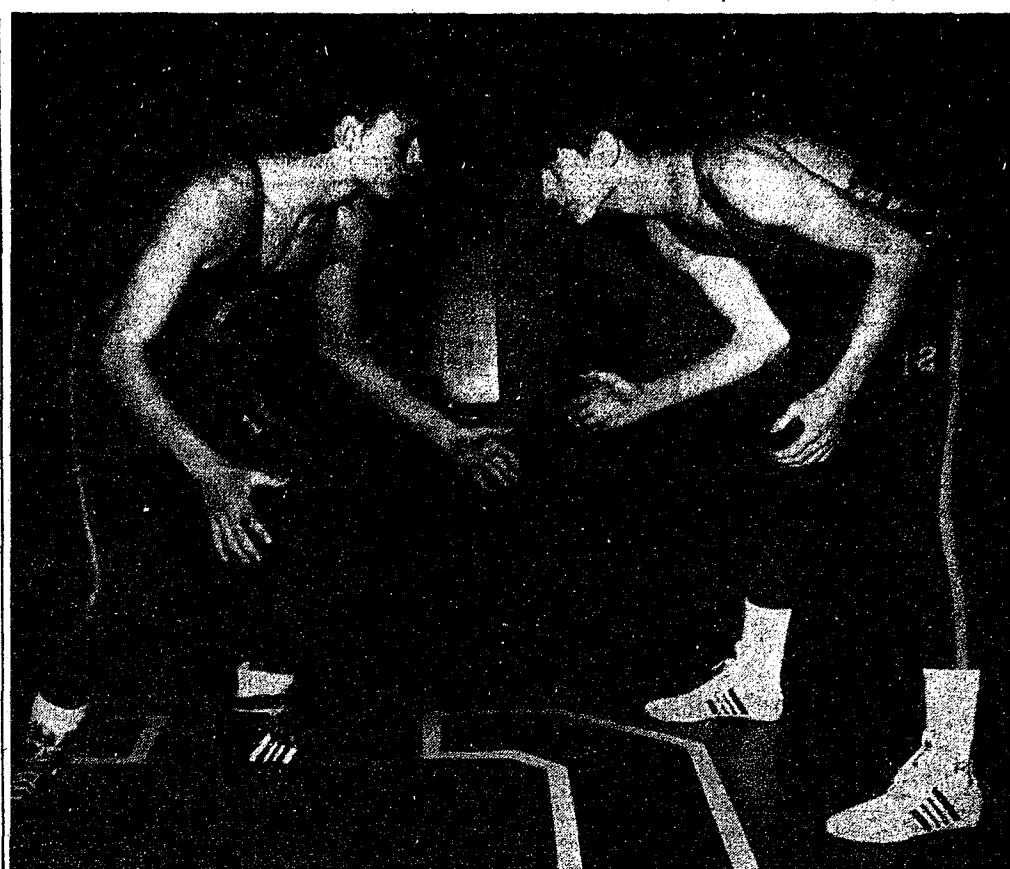
Next game is Thursday night at Dundee.

Frosh record now stands 9-1 with three games remaining on the schedule, and the Brighton Invitational Tournament.

## Homemaker

(Continued from page one)

The only national scholarship program exclusively for high school senior girls, the Betty Crocker Search for the American Homemaker of Tomorrow was instituted by General Mills in the 1954-55 school year to emphasize the importance of homemaking as a career. Since its inception, almost seven and three-quarters million girls have been enrolled, and with this year's grants scholarship awards will total in excess of \$14 million.



JIM WENCEL, left, is co-captain of this year's wrestling team. Wrestling at 119 and 126 pounds, "depending," Wencil has a 14-4-1 record for this season. He has wrestled for the past four years on Chelsea's varsity team. A Bulldog baseball player, Wencil also enjoys camping, and canoeing. He is a member of the Chelsea Baptist church youth group, and of the Chelsea High school Varsity Club. He wants to be a physical education teacher following college, and is presently undecided concerning a school choice. He is interested in both Central Michigan University and Olivet College, in Olivet, where he has been accepted. Jim lives with his grandfather, Isidore Wencil, 115 Island Lake Rd., Chelsea.

MIKE SPENCE, right, wrestles at 115 pounds for Chelsea. The wiry junior is into his third year on the Chelsea varsity team, although this is his first year to letter. Spence is a two-time winner of the state championship in archery, and is planning to try to start an archery club at Chelsea High school in the spring. Other hobbies include high school ski trips, and he plans to go to Paris with the French Club this spring. Mike is a member of St. Paul United Church of Christ Youth Fellowship. He is presently undecided about future plans, although he would like to go to college. Mike lives at home with his parents, Mr. and Mrs. Theodore Spence, 128 E. Summit St. He has two sisters, Mrs. Jim (Jerry) Peoski, and Mrs. Arnold (Mary) Deanhoffer, who are married, and he is an uncle four times over.

Washtenaw  
Community College



ALL  
CLASSES  
ON  
NEW  
HURON  
CAMPUS

## Basketball Race

(Continued from page one)

In other sports action this past week-end, Dundee downed South Lyon, 81-72, while Saline trampled the Novi Wildcats, 75-43. In a league tightening move, Lincoln defeated Dexter by a bouncing score of 95-69.

## SPECIALS

1-LB. PARTY ASSORTMENT: HERRUD

**LUNCH MEAT . . . . 99c**

BOXED

**VALENTINES . . . 29c up**

25-LB. BAG PURINA CHUCK WAGON

**DOG FOOD . . . \$2.89**

With 4 Pages  
Pantry Stamps

OPEN 6 A.M. TILL 11 P.M. EVERY DAY

**GALLUP - SILKWORTH  
PUMP & PANTRY**

295 S. Main St., Chelsea

Phone 475-7051

## PLYMOUTH SATELLITE

our whole new idea in 2-doors

	Satellite	Torino	Chevelle
Base Car	\$2758.00	\$2801.00	\$2802.00
Automatic Trans. (3-Speed)	216.40	217.00	216.50
Power Steering	116.25	115.00	115.90
Power Brakes (Disc)	69.60	70.00	69.55
Radio-AM	66.40	66.00	66.40
Whitewall Tires (Lowest Priced)	29.15	32.00	28.15
Wheel Covers (Lowest Priced)	27.35	26.00	26.35
Air Conditioning	388.00	412.00	407.60
Chrome Drip Molding	12.95	Std.	N.A.
Cigarette Lighter	4.35	Std.	Std.
Day/Night Mirror	7.65	Std.	Std.
TOTAL	\$3696.10*	\$3739.00*	\$3732.45*

More than Satellite **\$42.90** **\$36.35**

\*Based on manufacturers' suggested retail prices for comparably equipped 2-door models, excluding state and local taxes, dealer destination and preparation charges, and equipment required by state law.

## Beats competition on looks and price!

When we introduced our new Satellite, we knew we had a winner. Now, the official Best of the Year magazine, just named our Satellite, 1971 Car of the Year, and some pretty stiff competition. And

as it weren't enough to come out No. 1 on styling, handling, comfort and all the other criteria used in the judging, take a look at the chart above and see for yourself. We even beat our chief competition

Torino and Chevelle on price as well!

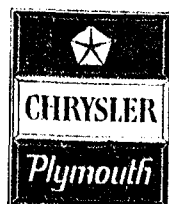
Our new Satellite. O'man through and get the deal of the year on the "Car of the Year" at the right place. Our place. We'll come through for you.

AUTHORIZED DEALER CHRYSLER



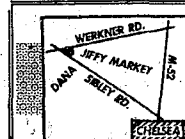
PAA

Plymouth Satellite



Coming  
Through.

**G. A. SALES & SERVICE · 1185 Manchester Rd.**



HOURS:  
7 AM - 10 PM  
OPEN 7 DAYS A WEEK  
PHONE 475-3701

**Jiffy market**

COMPLETE  
SUPER  
MARKET

BIG ENOUGH TO SERVE YOU.....SMALL ENOUGH TO KNOW YOU!  
Corner of SIBLEY & WERNER RDS.....CHELSEA, MICHIGAN

SALE PRICES EFFECTIVE WEDNESDAY, FEB. 10, THRU SUNDAY, FEB. 13, 1971.

YOUNG - LEAN - TENDER

**PORK CHOPS**

LOIN CENTER CHOPS  
END CUT CHOPS

**79c lb. 69c lb.**

FARMER PEET'S

**RING**

**BOLOGNA**

**59c lb.**

ALL BEEF, LEAN

**HAMBURGER**

**65c lb.**

GROUND FRESH DAILY  
SATISFACTION GUARANTEED

SHAMROCK U. S. GRADE A

**EGGS**

Medium Size **38c doz.**

FARMER PEET'S FARM HOUSE

**BACON**

1-Lb. Pkg. **48c**

U. S. NO. 1

**MICHIGAN  
POTATOES**

20-Lb. Bag **79c**

Long, Slender, Tender

**TEXAS  
CARROTS**

2 1-Lb. Pkgs. **29c**

CALIFORNIA

**HEAD  
LETTUCE**

**29c Hd.**

KRAFT'S

**MIRACLE  
WHIP**

SALAD DRESSING  
1-Qt. Jar **49c**

WAY BAKING CO.

**KLEEN-MAID BREAD**

1-Lb., 4-Oz. Loaf **18c**

**CIGARETTES**

YOUR FAVORITES

**39c pkg.**

**SQUIRT**

1-Pt., 12-Oz. Bottle

**19c**

America's Favorite  
Grapefruit Soda

COMPLETE STOCK

**BEER  
& WINE**

SUPERMARKET  
PRICES

**GILBERT'S  
CHOCOLATES**

in Beautiful

Valentine Boxes

**MARATHON GAS PUMPS**

**TOP QUALITY GAS**

**at the LOWEST PRICES IN TOWN!**

Regular **33.8**

Incl. All Taxes

Premium **37.9**

Incl. All Taxes

"Save Up to \$1.20 on a Tank Full"

**OPEN DAILY and SUNDAY 7 a.m. to 10 p.m.**



**Ads  
Taken  
Till 5 p.m.  
Tuesday**

**IT'S EASY TO  
BUY-SELL-RENT-  
HIRE & FIND WITH**

**WANTED ADS**

**Just  
Call  
GR 5-3581**

### WANT ADS

#### The Chelsea Standard

##### WANT AD RATES

PAID IN ADVANCE—All regular advertisements, 50 cents for 25 words or less, each insertion. Count each figure as 4 words. For more than 25 words add 2 cents per word for each insertion. "Blind" ads or box number ads, 85c extra per insertion. CHARGE RATES—Same as cash in advance, with 15 cents booking charge plus 14¢ per word before 5 p.m. Tuesday preceding publication. Pay in advance, send cash or stamps and save 15 cents. DISPLAY WANT ADS—Rate, \$1.10 per column inch, single column width only. 8-point and 14-point light type only. No borders or headlines. GARDS OF THANKS or MEMORIALS—Single paragraph style, \$1.00 per insertion plus 50¢ per word or less; 2 cents per word beyond 50 words. Minimum, 1 inch. COPY DEADLINE—5 p.m. Tuesday week of publication.

**FIREWOOD** for sale. Cheap. Call 475-2585 or 475-2842. **FOR SALE**—'68 Chev. 1/2 ton pickup, big box, 6 cylinder, standard transmission; runs good, fair condition; new tire, 7.50x16", 8-ply. Trailer, 7 1/2 by 3 1/2, complete racks, capacity 3,000 lbs. Ideal for vacation use. Firewood, 2 year seasoned oak and hickory, hardwood. Ph. 475-7729. **FOR SALE**—10 acres, excellent wooded land, Lewiston, Mich. Ph. 426-4011 or 475-2156 after 6 p.m.

**IRISH SETTERS, AKC** and **FDSB** registered. Quality bred, field dogs. Shots and wormed. Phone (517) 851-8559. **RADIO & TELEVISION Repair**. All's Radio. Phone 475-8545. **FOR SALE**—1970 Duster. Take over the payments. Ph. 475-8095 after 5 p.m.

### USED CARS

'70 Ford 4-dr.  
'70 Mustang Fastback  
'69 Torino convertible  
'68 Galaxie 500 2-dr. hardtop  
'68 Falcon 2-dr.  
'67 Ford wagon  
'66 Comet  
'66 Ford 4-dr.  
'66 Ford wagon  
'64 Chevrolet wagon  
'63 Ford convertible

### TRUCKS

'69 Ford 1/2 ton  
'68 Ford 1/2 ton  
'67 Ford 1/2 ton  
'66 Chevrolet 1/2 ton

### PALMER FORD

Open Mon., Wed., Thurs. Till 9:00  
Chelsea GR 5-3271

Headquarters for  
**Rubber Footwear**  
Famous Ball Band  
**Foster's Men's Wear**



**MAUSOLEUMS ★ MONUMENTS  
BRONZE TABLETS ★ MARKERS**

#### BECKER MEMORIALS

6033 Jackson Road  
ANN ARBOR, MICHIGAN

### WANT ADS

**BOARDING, trimming, training.** Town and Country Kennels, Jackson Rd. at Baker. NO 8-7200.

#### Gem Travel Trailers and Campers

**PICK UP COVERS**  
4" ————— \$100.00  
26" ————— \$179.00 and up

#### Triangle Sales

Chelsea 475-4902

**PATCHING and PLASTERING.** Call 475-7489.

#### CLOGGED SEWER

#### Reynolds Sewer Service

We Clean Sewers Without Digging  
Drains Cleaned Electrically  
**FREE ESTIMATES**  
**2-YEAR GUARANTEE**  
Phone Ann Arbor NO 2-5277  
"Sewer Cleaning Is Our Business—  
Not a Side Line"

**FOR SALE**—1970 Ski Doo, 399  
Nordic with skiboose. Phone 475-  
8807.

**SEE US** for transit mixed concrete. Klump Bros. Gravel Co. Phone Chelsea 475-2530, 4920 Loveland Rd., Grass Lake, Mich. x401f

**FOR REAL DOLLAR SAVINGS** be sure and see us before you buy any new or used car. Palmer Motor Sales, Inc. Your Ford Dealer for over 50 years. 2tf

**CAR & TRUCK LEASING.** For details see Lyle Christwell at Palmer Motor Sales, GR 5-3271.

### PANTY HOSE

Big  
New Selection

**Start at 88c**

**Support Panty Hose**  
\$4.95

at

#### DANCER'S

**CARPET CLEANING** by Burke. 12 cents a square foot, needs overnight to dry. In Chelsea call Merkel Brothers, 475-8621.

**FOR SALE**—Walnut trundle bed with innerspring mattress, good condition, \$50. Twin size bed with innerspring mattress, \$25. Phone 426-4815.

**FIREWOOD** for sale. Cheap; delivered. Call 475-2585 or 475-2842.

### LET GEORGE

#### DO IT

Home maintenance service. Repairs and odd jobs of all kinds. Day or night. Phone 475-8903.

**GEORGE ELLENWOOD**

563 McKinley St.

**FOR SALE**—7 top purebred Angus steer calves, 6 months old, ready to go to feed. Club calves. 17500 Sharon Valley Road, Manchester. Telephone 428-9757 nights or mealtime.

#### CLIP and SAVE

### VACATION

Store will be closed Saturday, Jan. 30.

Open on Monday, Feb. 14.

#### AL NALLI MUSIC

CHELSEA

Phone 475-7215

### WANT ADS

**ROBERT PATRICK** for home improvement, building and maintenance. Ph. 475-7480.

**HAMMOND ORGAN teachers** wanted to teach in their own homes. Call Grinnell Brothers, Ann Arbor, 662-5887.

**CALL FRANK** for all your carpet cleaning jobs, morning or weekend. Needs only 3 hours to dry. Only 10¢ per square foot. Phone now for free estimate, 761-4328. All work guaranteed.

**FOR SALE**—1970 Chaparral Firebird snowmobile, 834cc twin with starter and trailer. Will sell separate. Phone 475-2879.

#### Chelsea Area Homes & Farms

**5-ACRE FARM**—New Cape Cod home, 4 to 6 bedrooms. Quality built, all thermo-pane windows, central air conditioning, electronic air filter, family room, fireplace, dining room and utility room. Horse barn and 2-car attached garage.

**NEW LISTING**—Very nicely remodeled, 2-story, 3-bedroom home with 2-car garage, 1 1/2 baths. Located equal distance between schools. \$26,900.

**EARLY AMERICAN**—Renovated farm home on 5 acres with barns, 5 bedrooms, new furnace, new plumbing, new wiring. Chelsea schools.

**3-ACRE COUNTRY HOME**—Aluminum siding, fireplace, dining room, remodeled kitchen and bathroom, 3-car attached garage. 1 mile north of Chelsea.

**27 ACRES, 5 TROUT PONDS**—1/2 mile frontage on creek. 3-bedroom home. Chelsea schools.

**2 EXCELLENT HOMES**—Priced in the \$30,000's, for large families. One is 5-bedroom with 2 fireplaces and study. The other is only 10 years old with 6 bedrooms, fireplace and 3 full baths. These are tremendous buys located in the Village of Chelsea.

#### Eibler, Frisinger & St. Amour

REALTORS

Chelsea 475-8681

Evenings Call

Paul Frisinger 475-2621

Herman Koenig 475-2613

George Frisinger 475-4161

Lillian Krull 426-4585

#### SHOES

1/3 to 1/2 Off

#### DANCER'S

BARGAIN FLOOR

34tf

**WANTED**—Good green second cutting alfalfa, mixed hay and wheat straw well baled and made without rain. Write or phone (313) 848-6825. B. L. Cousins Inc., Erie, Mich.

**REDUCE EXCESS** fluids with Fluidex, \$1.69. Lose weight safely with Dex-A-Diet. At Chelsea Drug.

**PIANO TUNING**, Chelsea and area. Facilities for reconditioning and rebuilding. Used piano sales; reconditioned grands and verticals. R. Eldund. 426-4429.

#### Contractor Servicing Chelsea, Dexter and Manchester Areas

Complete Home Remodeling  
Inside and Outside

Specializing in extra living space, recreation rooms, kitchens and paneling. Installing all aluminum products, 5" eavestroughs, custom-made awnings, windows and doors, aluminum siding in many selected colors and styles.

Please Call

DALE COOK

Chelsea 475-8863

20tf

#### STOP FROZEN PIPES!

USE **WRAP-ON**  
ELECTRIC  
HEAT  
TAPES

NO TIME LIMIT  
FREE ESTIMATE  
GUARANTEE!

#### GAMBLES

110 N. Main St.



"The birthday that florist's Standard Want Ad reminded me of—is yours!"

### WANT ADS

**XEROX COPIES** made. First 20 at 20 cents each. Over 20, special rates. Merkel Brothers. 25tf

**EXPERIENCED PAINTER** looking for part-time work, interior or exterior. Reasonable rates, free estimates. Phone 475-7678.

### Real Estate For Sale

**OWNER ANXIOUS TO SELL**—Needs work but can be bought on low down payment. 4 bedrooms, full basement, gas heat, 2-car garage. Near downtown. Price reduced to \$18,000.

**VERY WELL BUILT**—5-bedroom house. Hardwood floors and trim, open stairway, fireplace. Needs work but has tremendous potential. Could easily be 2-family. \$18,500.

**7 1/2 ACRES**—All inside village limits. Has 3-bedroom house, garage, 745 feet of railroad frontage. \$30,000. Terms.

**BUILDING LOT**—One-mile east on Old US-12, 182 feet of frontage. 1 1/4 acres. \$4000.

**10 ACRES LOTS**—Several to choose from. 2 1/2 miles out. From \$7,500 up.

### CLARENCE WOOD

BROKER

646 Planders St.

Phone 475-2033

### REAL ESTATE

**10 VACANT ACRES**, 1 mile from Chelsea. Nice building site.

**49 ACRES** rolling, wooded. Possibility of pond. Chelsea school district.

**10 VACANT ACRES**, lots of pine trees, on hill, on Huron River Drive. Dexter school district.

**4-BEDROOM** older farm house on one acre. Dexter school district.

#### Howell Town & Country, Inc.

Local Representative

CARLIE WIEDMAN

Phone 426-3758

### FOR SALE

**40 ACRES**, \$500 per acre.

**TWO 10-ACRE** building lots, at \$600 per acre.

**HAVE BUYERS** for farms and Chelsea homes.

#### NO RENTALS

**R. D. Miller**

REAL ESTATE

Real Estate Broker

475-7311

15775 Cavanaugh Lake Rd.

Chelsea, Mich.

Post Office Box 381

List your property with Miller—fast, efficient service.

24tf

### Home For Sale

Older, 3-bedroom home, on two acres, full basement. Needs repair. Dexter schools. \$19,900 cash.

#### Mary Wolter Real Estate

7421 Dexter-Pinckney Rd.

426-8188

x34

**USED TRACTOR TIRES**—Large inventory on hand. Also used passenger - truck - grader tires. Jackson Tire Brokers, M-106, Munnich, Mich. Ph. 596-2825.

32tf

### Always at Your Service on the Double Quick!

Looking for heads-up auto service? Look no further. That's us! Always on our toes to serve you promptly, efficiently, courteously!

#### PURE OIL PRODUCTS

### JIM'S PURE SERVICE

PHONE 475-2822

501 SOUTH MAIN

Tires — Batteries — Tune-Ups — Brake Service — Wheel Alignment

### WANT ADS

**MEL HARTMAN**, residential builder. Free estimates: houses, garages, kitchens. Flat work and roofs. Call 878-6514.

**TRAVEL TRAILERS**—13-ft. and up; 10x65 ft. trailers. John R. Jones Trailer Sales, Gregory, Mich. Phone 498-2655.

### WORK SHOE HEADQUARTERS

Famous Red Wing Brand

\$12.95 to \$26.95

Foster's Men's Wear

34tf

### BULK DRY CLEANING

Picked Up and Delivered

50¢ per lb.

\$4 minimum charge

Phone 668-9024

### WESTGATE LAUNDROMAT

Westgate Shopping Center

Co. Neil, Inc.

x36

### Real Estate For Sale

**55 ACRES** on blacktop road.

**FOR RENT**—3-bedroom, 2 baths, on 120 acres with lake.

Call

Kern Real Estate

Phone 475-8563

33tf

**ALCOA SIDING** with Remodeling—Since 1938, Prompt service, professional workmanship. William Davis Contractor, Ann Arbor, Mich. Estimate, no obligation. Phone (313) 663-6638. Completed work near you.

**CHILD CARE** in my licensed home, downtown Chelsea area. Phone 475-2760.

x35

### Home For Sale

Older, 3-bedroom home, on two acres, full basement. Needs repair. Dexter schools. \$19,900 cash.

#### Mary Wolter Real Estate

7421 Dexter-Pinckney Rd.

426-8188

x34

**USED TRACTOR TIRES**—Large inventory on hand. Also used passenger - truck - grader tires. Jackson Tire Brokers, M-106, Munnich, Mich. Ph. 596-2825.

32tf

### Home For Sale

Older, 3-bedroom home, on two acres, full basement. Needs repair. Dexter schools. \$19,900 cash.

#### Mary Wolter Real Estate

7421 Dexter-Pinckney Rd.

426-8188

x34

**USED TRACTOR TIRES**—Large inventory on hand. Also used passenger - truck - grader tires. Jackson Tire Brokers, M-106, Munnich, Mich. Ph. 596-2825.

32tf

### Home For Sale

Older, 3-bedroom home, on two acres, full basement. Needs repair. Dexter schools. \$19,900 cash.

#### Mary Wolter Real Estate

7421 Dexter-Pinckney Rd.

426-8188

x34

**USED TRACTOR TIRES**—Large inventory on hand. Also used passenger - truck - grader tires. Jackson Tire Brokers, M-106, Munnich, Mich. Ph. 596-2825.

32tf

### Home For Sale

Older, 3-bedroom home, on two acres, full basement. Needs repair. Dexter schools. \$19,900 cash.

#### Mary Wolter Real Estate

7421 Dexter-Pinckney Rd.

426-8188

x34

**USED TRACTOR TIRES**—Large inventory on hand. Also used passenger - truck - grader tires. Jackson Tire Brokers, M-106, Munnich, Mich. Ph. 596-2825.

32tf

### WANT ADS

**ATTENTION**—Moriarty erects buildings all winter if you are in need of a commercial or agricultural building order before winter and want to save money. Quality materials and workmanship guaranteed. Call Petersburg 279-1865 collect or write to Box 84, Petersburg, Mich., for all your pole building needs see Moriarty Pole Builders today.

**WANTED**—RN or LPN to relieve 7-3 and 3-11 shifts. 40-hour week. call Mrs. Dehn, 475-8633.

**NOTICE**—As of Jan. 27, 1971, I will not be responsible for any debts other than those contracted by me. Edwin Mehl Collins.

### ADMIRAL

Complete line Solar Color and black and white TV. On display now. Compare quality and prices.

3-year warranty



## WANT ADS

PIANO TUNING at savings! New man in area offering introductory rates to build clientele. 769-0130, 304f

Complete  
SEPTIC TANK SERVICE  
DRAIN FIELDS  
DRY WELLS  
FILL DIRT - ROAD GRAVEL  
Call Collect

K & D Sanitation  
Phone Muntich  
596-2273 or 596-2186

PRINTING from John's Shop. Getting married? Celebrating anything? We can furnish all printing for any occasion. Phone 475-7500.

BABYSITTING by elderly woman in her own country home days. Phone 475-8033 anytime.

WANTED - House to rent anywhere within Chelsea School District. 3 bedrooms required. Ford engineer, references available. Reply to Chelsea Standard, Box TA-7.

## WANT ADS

LOT FOR SALE—in Clardale Ct. Phone 475-8427. x34

## REAL ESTATE

WEST OF CHELSEA—10 miles, very nice, three bedroom home, full basement on two acres of land. Good financing available with \$500 down or less to the right party. \$16,500.

NORTH AND WEST of Chelsea—10 acres with a two-bedroom, well remodeled farm home. \$20,000.

PORTAGE LAKE—Year around, three bedrooms, with fireplace, 60 feet of lakefront, with excellent sand beach. Additional lot across the road. Raft and motor included. \$12,900.

60 ACRES Stockbridge area, very good land, with a small stream and three acres of woods. Over 1,000 feet road frontage. Farm home and barn. \$84,000.

## Willis Real Estate

(517) 764-1416  
or (517) 522-8121

## WANT ADS

APPLES MUST BE SOLD—Czapla's Orchard, 1817 Rank Rd. is closing its doors forever Sunday, Feb. 14. Sale prices start at \$1.00 bu. Open 9-1 p.m. weekdays and 9-5 week-ends. x34

## Basement &amp; Garage

## Sale

Saturday & Sunday,  
Feb. 13-14

from 9 to 5

Silver plated tea set, two china tea sets; portable washer; mangle; day bed; davenport and chair; combination desk, chest, and clothes closet; (cedar lined); sandwich grill; french fryer; lamps; ash trays; glasses; miscellaneous antique dishes and so forth. Small desk and tables, numerous other items.

This is good clean merchandise, and priced to sell for cash only.

13835 Sauer Dr., North Lake  
Phone 475-7157

## WANT ADS

VACANCY AVAILABLE for lady patient. Good food and care. Phone 662-0696. x36

## FOR SALE

3-BEDROOM brick home, family room, garage, close to US-23.

3-BEDROOM home in Pinckney, with carport, full basement with fireplace.

TWO LOTS off Old US-23, close to Brighton.

## Marshall Realty

440 Dexter Rd., Pinckney, Michigan  
Pinckney 878-3182  
Chelsea 475-8583, or 479-7096  
Dexter 426-8619

HOUSE FOR RENT—Complete downstairs and basement, garage, \$150 per month. Stove and refrigerator furnished. Utilities not furnished. Phone 475-5961.

MOTHERS—We can work together to keep your child happy and safe, while you work. Child care in my country home, Monday thru Fridays. Good references. 475-4792.

## WANT ADS

HUNTING PUPS to give away. Phone 475-2119. x34

## CARPETING

Overstock - Prices Cut  
To Reduce Stock

12 ft. Wunda Weave olive shag, rubber back, lay it yourself. Sale

Per yd., reg. price, \$8.95. \$4.98

12 ft. Lees, avocado nylon shag. Per yd., reg. price, \$8.95. Sale

12 ft. light green plush shag. Per yd., reg. price, \$8.95. Sale

12 ft. blue and white string shag. Per yd., reg. price, \$8.95. Sale

12 ft. gold and yellow shag. Per yd., reg. price, \$7.95. Sale

15 ft. blue nylon twist. Per yd., reg. price, \$7.95. Sale

12 ft. medium green plush nylon. Per yd., reg. price, \$5.98. Sale

12 ft. red nylon. Per yd., reg. price, \$4.99. Sale

15 ft. medium green nylon. Per yd., reg. price, \$5.98. Sale

1 roll olive gold nylon rubber back. Good day-it-yourself carpet. Per yd., reg. price, \$5.99. Sale

## Merkel Bros.

Open Mon. & Fri. TH 9  
Phone Chelsea 475-8621

FOR RENT—Small unfurnished house, Cavanaugh Lake. Call 475-7417.

FOR SALE—Display kitchen cabinets. A 9 ft. by 7 ft. Ell-shaped assembly with 39 inch writing desk at left, lazy susans in corner, (top and bottom), sink on right, doors and drawers. Formica faced in Oak Royale. Complete upper and lower units. List price, \$680.00. Sale \$329.00. Chelsea Lumber Co. x37

## Household Sale

Antiques, furniture, and miscellaneous items.  
Friday, Saturday, and Sunday,  
9 a.m. to 6 p.m.

## Mary Wolter

Real Estate  
4034 North Territorial Rd.  
North Lake

## SECRETARY

Hospital administrator needs an experienced secretary. Prefer personnel experience. Excellent pay and fringe benefits.

Apply in person

Chelsea  
Medical Center, Inc.

Chelsea  
Community Hospital  
775 S. Main St.  
Chelsea, Michigan

SIGNS PAINTED. Phone 475-8363.

FOR SALE—Tape recorder and tapes. Phone 475-8363.

BASEMENT SALE—320 Pierce St., Feb. 11-13. 9 a.m. to 4:30 p.m. Men's and women's clothes, end tables, book shelf, shoes (almost new), dishes, pots and pans. Many other items.

FOUR SMALL, ADORABLE PUPPIES need a home. 6 weeks old, part Pekinese, and part Terrier. Phone 475-7387.

FOR SALE—16 sets of used car tire chains, take your pick at \$5 a set. 100 used car and truck tires from \$2 up. 1964 Chevrolet, 4-door, 6-cylinder, standard shift car at \$325. Balmer's Brake Service, 140 W. Middle St., Chelsea. Phone 475-5131.

LOST—Navy ring, with large blue stone, between parking lot and high school entrance Saturday evening, Feb. 6. Reward. Phone (Milan) 489-2543.

FOR SALE—Black Irish Setters 8 weeks old. 3 to choose from at \$3 each. See at 115 Lincoln St. Phone 475-2865.

FOR SALE—Maytag wringer washer, excellent condition. \$35. Call 475-8767 after 6 p.m.

CARD OF THANKS  
We wish to extend our heartfelt thanks and appreciation for the acts of kindness during the loss of our dear mother.

Stanley Czapla,  
Mr. and Mrs. Douglas Mullen and family.

CARD OF THANKS  
Time and space does not permit us to thank each organization and individual for the food, flowers, gifts, visits, and cards by all of you. Thanks and God bless you.

Howard and Ruth Walz.

A Diploma For You  
NEVER TOO LATE!

WASHTENAW  
COMMUNITY  
COLLEGE

Motor Vehicle Fund  
Collections Reduced

Motor Vehicle Highway Fund collections for the fourth quarter of 1970 were down 1.9 percent from the same period in 1969. Revenues were distributed to Michigan counties and municipalities this past week the State Highway Commission announced today.

According to State Highway Director Henrik E. Stafseth, net receipts for October, November, and December were \$86.5 million, a decrease of \$1.7 million from the fourth quarter in 1969.

Department analysts said the general economic slow-down, combined with the work stoppage in the auto industry, contributed to the decline in gasoline taxes.

The surrounding towns of Saline, Manchester, and Milan showed decreases also. Saline dropped from \$7,778 in 1969 to \$7,661 in 1970, and Manchester received \$6,223 in 1970 compared with \$6,397 in 1969. Milan showed the largest revenue loss by dropping from \$12,519 in 1969 to \$11,989 in 1970.

Ann Arbor's revenues dropped from \$230,868 one year ago to \$225,835, while Ypsilanti showed a loss of from \$58,319 in 1969 to \$57,086 in 1970.

The Highway Fund is made up of state taxes on gasoline and diesel fuel and license plate fees paid by motorists.

After deduction of collection costs by the Department of State, \$3.5 million for retirement of Mackinac Bridge bonds, 1.5 percent of gasoline taxes for the State Waterways commission, and other fixed costs, such as the manufacture of license plates, the money is distributed according to a formula established by the State Legislature.

Forty-six percent goes to the Department of State Highways, 34 percent to the state's 83 counties and 20 percent to the 529 incorporated cities and villages.

Under this formula, the Highway Department received \$36.8 million from the 1970 fourth quarter collections. The counties received \$29.4 million and cities and villages, \$17.3 million.

Momads, Inc., a Detroit-based 1,900 member flying club who travel in their own airplane, has announced the addition of a second airplane to their "fleet." A number of Chelsea and Dexter residents are members of this club, which takes about 25 trips a year to Europe, the Caribbean, South America, Hawaii, and throughout the United States.

The new airplane is a Lockheed Intercontinental Electra turboprop, which can fly faster, higher and more smoothly over most turbulence. It was obtained for about \$400,000, one-tenth of the original cost, from Quantas Airways, which used the long-range craft on its Australia to Africa routes.

Nomads' officials said it has three new engines and a newly rebuilt fourth, capable of cruising 370 miles an hour at 25,000 feet, which is 60 miles and 10,000 feet more than the club's piston-engine DC-7. Each carries about 90 passengers, but the Lockheed has wider seats with more leg room, improved pressurization and other features for passenger comfort.

Among the Chelsea-Dexter members of the club are Mr. and Mrs. Bruce Waggoner of Dexter, and Mr. and Mrs. Karl Koenigster of Chelsea. The couples have taken many trips together, over the past few years, including two trips to Europe, in 1966 and 1967, a trip to San Andres in 1968, Trinidad and Curacao in 1969, Spain, Maj-

Area Post Offices  
Closing Windows  
On Saturdays

Beginning Feb. 20, all post offices in Washtenaw county will close their finance sections on Saturdays. Following the practice of the larger offices in the county which have been closed on Saturdays since last October, public days since last October, stamp transactions, money order purchases, registry, parcel post, information and other services. Post Office lobbies will be open to lock box customers.

Mail will continue to be collected, dispatched and delivered on Saturdays as heretofore.

Post Offices affected by the forthcoming adjustment in their service schedule are Dexter, Chelsea, Manchester, Bridgewater, Saline, Milan, Pinckney, Whitmore Lake, Whittaker, Willis and Salem.

In close proximity to Washtenaw county and also affected by the service change are the post offices at Gregory, Hamburg, and Lakeland.

Cub Scouts...  
DEN 1, PACK 455—

Den 1, Pack 455 met Feb. 4. Meeting opened with the flag ceremony. Mike Eisele carried the American flag, and David Hall carried the Den flag. Chm Lane was a guest at the meeting.

Work was continued on the favors the boys are making for the Blue and Gold Banquet which will be held Feb. 25.

The boys played a game called "Hit the Planet," and had lots of fun. Leon Wheeler was the winner. Todd Miller brought treats.

Meeting closed with the living circle.

David Hall, scribe.

WANTED  
FOR LEASE  
Building in  
Chelsea, Mich.

Building can be in the downtown area, shopping center, or a free-standing location. Must be suitable for a retail business and have 3,000 square feet on one floor.

Send details to:  
R. C. Hutchings  
WESTERN AUTO  
SUPPLY COMPANY  
Box 990  
Fort Wayne, Ind. 46801

Now Paying the Highest Interest Rates  
On Savings Accounts  
Any Bank Can Pay

CHELSEA STATE BANK

Member Federal Reserve System

Member Federal Deposit Insurance Corp.

Member Federal Reserve System

Member Federal Deposit Insurance Corp.

Member Federal Reserve System

Member Federal Deposit Insurance Corp.

Member Federal Reserve System

Member Federal Deposit Insurance Corp.

# PRO CHLSEA HARDWARE

110 South Main St. Phone GR 9-6311

## DISCOVER THE VALUE OF A PENNY DURING OUR ONE CENT SALE-ABLES

9" WOOLLY PAINT ROLLER  
COVERS  
TWO FOR ONLY 1¢  
WHEN YOU BUY  
9" PAINT ROLLER & TRAY SET  
AT OUR LOW PRICE \$1.49

PROFESSIONAL QUALITY  
HAND SAW  
FOR ONLY 1¢  
When you buy First Saw at our Low Sale Price \$6.95

4-6 PAK VACUUM  
CLEANER BAGS  
FOR ONLY 1¢ PKG.  
When you buy First Package at our Low Sale Price 79¢

HEAVY DUTY ALL WEATHER RUBBER  
WELCOME DOOR MAT  
FOR ONLY 1¢  
WHEN YOU BUY FIRST  
DOORMAT AT OUR LOW SALE PRICE 99¢

YOU GET FESCO  
DISH DRAINER TRAY  
FOR ONLY 1¢  
WHEN YOU BUY FESCO  
DISH DRAINER \$1.95  
AT OUR LOW SALE PRICE

VALUABLE COUPON  
PROTECT FURNITURE, FLOORS AND WALLS  
9' x 12' DROP CLOTHS  
Low cost protection on many household jobs.  
WITH THIS COUPON PACKAGE OF THREE 66¢  
WITHOUT COUPON \$1.00

16-PC. SANDING ATTACHMENT  
FOR ONLY 1¢  
WHEN YOU BUY  
4" ELECTRIC DRILL  
At Our Low Sale Price \$8.88  
Professional type drill that any man would be proud of. Rugged, has high torque power.  
Convert your electric drill into a sander in a jiffy.

HANDY, REFILL  
PROPANE CYLINDER  
FOR ONLY 1¢  
When You Purchase  
PROPANE TORCH  
AT OUR LOW SALE PRICE \$6.99

3 HP 19" ROTARY MOWER  
Cuts wide 19-inch swath through the toughest grass cutting jobs.  
SALE PRICED \$49.88

GUARANTEED ONE YEAR \$6.99  
HOME BARBER KIT  
Smooth cutting Teflon coated blade in clippers. Kit includes clippers, shears, 5 combs, blade guards, case and instructions.

\$5.99  
DELUXE LIGHTED  
SHADOW-PROOF  
VANITY MIRROR  
Has magnifying and natural image reversible mirror, four recessed heat and glareproof bulbs for clearer reflection. Enclosed in sleek travel case of vinyl simulated leather.

VALUABLE COUPON  
D-TYPE, FLASHLIGHT BATTERY  
HEAVY DUTY  
FOR ONLY 1¢  
WITH THIS COUPON  
HEAVY DUTY  
When you buy First Battery at Our Low Sale Price 19¢

## TODAY'S THOUGHT

By LOUIS BURGHARDT

Authors of fiction have never created a comparable character to capture the admiration and affection reserved for Lincoln in history. Such memorialization has never happened before and probably will never happen again. Edwin M. Stanton certainly made a prophetic statement following Lincoln's death when he sadly said, "Now he belongs to the ages."

On Lincoln's birthday, we honor a man who rose from disheartening poverty to become one of the greatest and most revered men among men in history. His singular humility would prompt him to dislike the homage America gives him. Defeats and disappointments plagued him in his lifetime. Events and people gave him ample reason to be discouraged and resentful. He conquered discouragement, resisted resentment. A most fitting eulogy was expressed by Ralph Waldo Emerson — "His heart was as great as the world, but there was no room in it to hold the memory of a wrong." BURGHARDT FUNERAL HOME, 214 East Middle St., Chelsea, Mich. Phone GR 5-4141.

## —SPECIALS—

MILLER'S  
Ice Milk . . . . 1/2 gal. 59c

ECKRICH ALL-BEEF  
Hot Dogs . . . 1-lb. pkg. 65c

GRADE A LARGE  
Eggs . . . . . doz. 43c

WAGNER'S  
Orange Drink . . . qt. 26c

ALL FLAVORS HUNT'S  
Snack Pack . . . . . 50c

## KUSTERER'S

FOOD MARKET  
DIAL 475-2721 WE DELIVER

## This Bank

Will Be Closed

FRIDAY, FEB. 12

(LINCOLN'S BIRTHDAY)

and

MONDAY, FEB. 15

(WASHINGTON'S BIRTHDAY)

As required by law.

Regular Bank Hours

Will Be Observed

Saturday, Feb. 13

Open 9 a.m. to 12 noon

Now Paying the Highest Interest Rates

On Savings Accounts

Any Bank Can Pay

## CHELSEA STATE BANK

Member Federal Reserve System

Member Federal Deposit Insurance Corp.

Many additional items reduced drastically for inventory adjustment.



# Chelsea School Children Score in Upper Levels on Assessment Program

Chelsea's school children have a better pupil-teacher ratio (23.4 to 1) than 66 percent of the school children across the state of Michigan, according to a report issued recently by Chelsea High school counselor, George Bergman.

Bergman, in a lengthy report to Superintendent Charles Cameron on recently interpreted results of the 1969-70 series of the School Assessment Program, for the benefit of Cameron, the school, and the public at large.

Among the findings of the massive tests, which were conducted one year ago, were the following: Chelsea's teachers average seven years experience, which is lower than the level of experience found among the teachers in 84 percent of the schools in Michigan. The rate of teachers with Masters Degrees, however, was higher than 89 percent of the districts.

Average teachers salary, \$8,590, was higher than 68 percent of the districts, while the district's average valuation per child, \$19,645, was higher than 86 percent of the districts. Local revenue per pupil, \$365, was higher than 72 percent of the districts, although state school aid per pupil, \$255, was 78 percent lower than for the other districts.

A \$441 expenditure per pupil was cited by the report as being higher than 66 percent of the districts, while total expenditure per pupil in Chelsea, \$586, was higher than 61 percent of the districts.

According to Bergman's report, the Michigan Assessment Program was initiated by the State Board of Education, supported by the Governor and funded by the legislature through enactment of Public Law 407 in August 1969.

Goal of the program is to provide educators and citizens with information regarding the status and progress of Michigan's educational system so they may make more informed decisions about education in the state.

Three major purposes guided the design and operation of the 1969-70 Michigan Assessment Program. The first purpose was to gather data which would show the levels of education performance and the levels of certain factors related to performance. Education performance was defined in two ways in the program, by students' scores on a test of vocabulary, and by

scores on a basic skills achievement battery.

The related factors were for four types: students' socio-economic background, students' attitudes and aspirations, school district financial resources, and school district staff resources.

The second purpose of the Assessment Program was to gather and display data that would indicate the ways in which educational performance and certain factors related to performance are distributed in Michigan.

The third major purpose of the Assessment Program was to provide local school district officials and citizens with information regarding their own school district and its schools.

For classification purposes, the entire state was divided into geographic regions and community types. Chelsea Schools District was part of Region 2, Southern Michigan, and is classified as Type III, a town, which is a community of 2,500 to 10,000 people that serves as the economic focal point of its environs. Other community types were Type, Metropolitan Core; Type II, City; Type IV, Urban Fringe, and Type V, Rural Community.

Results of testing Chelsea's fourth and seventh graders last school year shows that they have a higher social and economic status than those in 92 percent of Michigan districts.

North school rates 12 percent higher than other districts in considering school achievement importance, while South school rates 11 percent higher in the same attitude. At the middle school level, however, Chelsea rates 78 percent higher.

In self-perception, North school rated 27 percent higher, while South school was 73 percent higher. Middle school students were in the 59th percentile.

In their attitudes toward school, North school students rated 59 percent higher, while South registered 87 percent higher than students in other school districts. The middle school fell into the 38 percent category.

Bergman indicated that it should be noted that the above depicted "Socio-economic Status" variables are difficult concepts to define for everyone's satisfaction, and even more difficult to estimate. He said that it appears that there exists a high relationship between student background characteristics and the financial levels at which schools are supported. Likewise, several studies have also shown a relationship between the socio-economic status and the "qualities of instructional staffs."

In short, students' socio-economic status is thought to have a powerful influence on both achievement and on school characteristics. Therefore it is included as one type of assessment measure.

Students' socio-economic status is often thought to be a function of three major factors: family income, parents' educational level, and parents' occupation. Additionally such factors as housing quality, and crowdedness; and family structure and stability and population density are thought to be indicators of one's socio-economic status.

Chelsea fourth and seventh graders ranked well, overall, in scholastic achievement as compared with scores from other schools in Michigan. On practically each test the seventh graders' average composite achievement placed them in the upper third of Michigan's seventh graders. Fourth graders' average composite score placed them right on the line between the middle and the upper third among Michigan's fourth grade students last year.

The percentile equivalent, mean (average) scores of knowledge skills tested, by school, appear in the following table:

## BASIC SKILLS ACHIEVEMENT

	Vocabulary	Reading	English Expression	Mathematics	Composite Achievement
North School	67	67	57	64	64
South School	61	64	75	53	65
Middle School	78	88	68	64	76

It should be noted by the person not familiar with test scores and their interpretation that statistically speaking there appears to be no significant difference between the performance scores by Chelsea fourth grade children of the North Elementary school and the fourth graders at South Elementary school.

Bergman warned that these scores ought not to be given too heavy import in isolation from a consideration of the children's intellectual endowment, their actual

educational progress, and other related factors.

He further stated that only after this school year's Assessment Program results, and the results of a few additional years, are available, should the citizens of Chelsea try to assess the "adequacy" and "completeness" of the children's curriculum, in light of desirable actions.

Eighty North school children participated in this test, along with 90 South school children, and 170 Middle school students.

## BEACH JUNIOR HIGH SCHOOL HONOR ROLL

First Semester, 1970-71

**6th GRADE**—Dawn Albrecht, Lisa Allshouse, Michele Ball, Michael Bowen, Kimberly Brown (all A), Diane Burg, Robert Burgess, Kathy Burns, Julia Chapman, (all A), Michael Check, Anthony Clark, Lorraine Clark, Karin Eisemann, Gordon Evans, Susan Frisbie, Annette Gaken, Richard Haller, Barbara Hindenker (all A), Treva Huston, Kent Kargel, Kevin Kemner, Becky Kraai, Carol Linebaugh, Karen Milliken, Don Morrison, Donald Nadeau, Sandra Norton, Rene Papo, Kyle Parker, Sandra Patrick, Diana Pletcher, Renee Poisson, Julie Proctor, Laura Rademacher, Nancy Rossbach, Diana Roy, Brenda Salyer, Patricia Salver, Judy Schiller, Kathie Sebestyne, Delaney Seitz, Linda Shaw, Tina Sindlinger, Wendy Smith, Steven Smyth, Michael Staphis, Michael Stoner, Ellen Straub, Robert Swanberg, Karen Trinkle, Bethene Troyer, Harold Vandervoort, Lisa Walworth (all A), Mark Warren, Anthony Woodward, Diane Zeeb, Karen Keiser, Karen Simon.

**7th GRADE**—Dora Alexander, Kurt Allshouse, Martha Blanchard, Michele Blanchard, Steven Bowen, Lois Butler, Yvonne Clark, Sandra Crouch, Mark Dalton, Helen Egeler, Elizabeth Marie Fahrner, Kathryn Fairbanks, David Frame, Myra Gadhery, Richard Gaunt, Pam Greenleaf, Randy Guenther, Gregg Harrook, Elizabeth Haselschwardt, Erin Headrick, Nancy Hepburn, Elizabeth Hoover, Annette Houle, Mary Hume, Linda Jennings, Sara Johnson, Ann Kalishek, Karen Kern, Steven Klink, Teri Knickerbocker, Mike Kosminski, Teri Lutovsky, Paul Marshall (all A), Matthew Merkel, Suzanne Morrison, Lynn

Olson, Karen Ottoman, Theresa Ottoman, Deborah Packard, Michele Papo (all A), Daniel Pfeiffer, Kathy Pierce, David Pletcher (all A), William Rademacher, Dawn Roberts, Barbara Roy, David Schaike, Renee Schneider, Susan Schulze, Mark Seyfried, Brenda Shadoan, Pamela Siebert (all A), Lynn Smith, Craig Sprague (all A), Julia Tite (all A), Karen Tobin, Diane Van Gorder, Robbie Wenk, Anne Williams, Deborah Wisniewski.

**8th GRADE**—Michael Agopian, Diane Akin, David Alber, Karen Bassett, Steven Bennett, Pamela Blackwell, Mary Beth Chandler, Deborah Conklin, Jodi Daniels, Kathy Dunn, Tim Eder, Constance Edwards, Cindy Frisbie, Teresa Gilbreath, Francis Grohnert, Gregg Haller, Cindy Harrook, Robert Hercules, Merry Hoffmeyer, Janis Hopkins, Terri Jones, Ann Kalmbach, Jane Knott, Vickie Koch, Teresa Lewis, Kim Longworth, Duane Lukic, Michelle Maistre, Laurie Mann, Donald Messner, Randy Musbach, Gary Nevill, Michele Osborne, Mark Pennington, James Powers, Chris Rabbitt, Debra Rossbach, John Schaefer, Laura Schardin, Elaine Schenck, Lori Schiller, Sharon Schiller, Robin Schneider, Carol Schroen, Susan Shaw, Linda Sifton (all A), Brian Smith, Susan Smith, Shawn Spaulding, Cheryl Stepp, Elizabeth Tobin, Cindy Turcott, Duwana Villemure, Paul Wood.

## Norman Brassow Elected Director On PCA Board

Norman Brassow, Dexter, was re-elected to a three-year term as a director for the Production Credit Association, it was announced this week. Brassow is a partner with his son on a dairy farm near Dexter. He was opposed for the nomination by David Gordon of Saline.

Nominating committee for the position was composed of David Wolfgang, Chelsea; Jay Bradbury, Dexter; and Ronald Spiegelberg, Dexter.

The statement of conditions showed the Association had outstanding loans of \$9,898,000. Last year it loaned more than \$12,700,000 to more than 900 farmers in the area.



"MELODIE PETITE" by Frankiser was played by this quartet, less one, composed of Darlene Beeman, Phyllis Buss, and Janice Schenk. Missing from this photo is Patty Young. This B-flat clarinet quartet was the only other group to receive a rating

of "T" at the festival. Band director Warren Mayer indicated that some of the groups to receive a "T" rating will play Thursday evening (tonight) at the high school Band Boosters meeting.

## Washtenaw Building Booms

Building permit totals for the Village of Chelsea came to 73 for this past year, according to a recent report by the Washtenaw County Building department.

The estimated value of the permits was \$594,663, the report claimed. This figure represents a total of all one- and two-family dwellings permits issued, along with permits for private garages, commercial buildings, alterations and repairs of dwellings, and miscellaneous permits.

Altogether, five permits for one- and two-family dwelling homes were issued. These were valued at \$91,000. Six private garages were requested, at a cost of \$8,800, while two commercial buildings were approved, valued at \$55,000. Forty-five alterations and repairs of dwellings were okayed, estimated at a cost of \$67,926, while

13 miscellaneous permits, valued at \$89,926, were issued.

Four permits were issued for private institutional buildings, valued at \$317,000.

Building permits issued within the Village of Dexter came to 40, valued at an estimated \$197,400, according to the report. Two permits were issued for one- and two-family dwellings, which came to a \$71,000 total, the report indicated. Two private garages, valued at \$4,400 and two commercial buildings, valued at \$13,000, were also requested, while 34 alterations and repairs to dwellings valued at \$109,000 were approved.

By townships, Dexter totaled 87 permits issued, at an estimated value of \$917,500, while Freedom township approved 30 permits, for

\$284,000 value. Lima township issued 42 permits at an estimated cost of \$527,790, while Lyndon approved 39 permits for buildings costing a total \$362,910.

Sharon township issued eight, for \$77,700 total building, and Sylvan township issued 29 for a \$219,900 building cost total. Fifty-four permits were issued within Webster township, amounting to \$724,717 total cost.

Total number of building permits issued in Washtenaw county was 3,696, the report indicated, less those for Ypsilanti township, which were not available at the time of its issuance. These permits totaled \$71,559, value of construction.

U.S. income rose from an average of \$57.80 a week in 1951 to \$131.60 a week in 1970, or an increase of over 228 percent. In that same period food costs rose only 30 percent.

Fifty-five percent of the world's merchant fleet can now reach Michigan via the St. Lawrence Seaway.

## D. EDWARDS & SON Home Maintenance Service

Vinyl or Aluminum SIDING - WINDOWS DOORS  
Roofing - Roof Repair  
— ALSO —  
Building Maintenance and Supplies

Phone Chelsea 479-4231 or Napoleon 536-4843

## SPECIAL

thru Wednesday, February 17, 1971

# BRAZIER FISH & FRIES 59¢

We Now Have CHILI - 40¢

Home of fine Brazier foods

Dairy Queen

brazier

901 S. MAIN ST., CHELSEA PHONE 475-2677

## MEN NEEDED In this area to train as LIVESTOCK BUYERS

LEARN TO BUY CATTLE, HOGS AND SHEEP

at sale barns, feed lots and ranches. We prefer to train men 21 to 35 with livestock experience. For local interview, write age, phone, address and background to:

NATIONAL MEAT PACKERS TRAINING

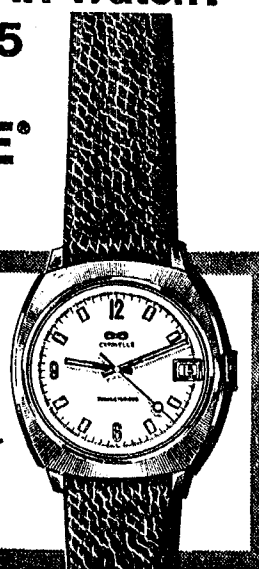
236 E. Town, dept. B-29 Columbus, Ohio 43215

It's a TRANSISTOR Watch!  
It's a CALENDAR Watch!  
It's only \$49.95

CARAVELLE® by BULOVA

The Caravelle Calendar Transistor runs on a long-life battery from one year to the next. There are no mainsprings to break. No contact points to wear out. And it never needs winding! It's the most reliable calendar watch you can buy... and it's priced so low.

Transistor "B" Calendar, water-resistant, stainless steel, luminous dial.



WINANS JEWELRY

CUSTOM DRAPERY SALE  
SAVE 20%  
2 WEEKS ONLY - FEB. 4-18

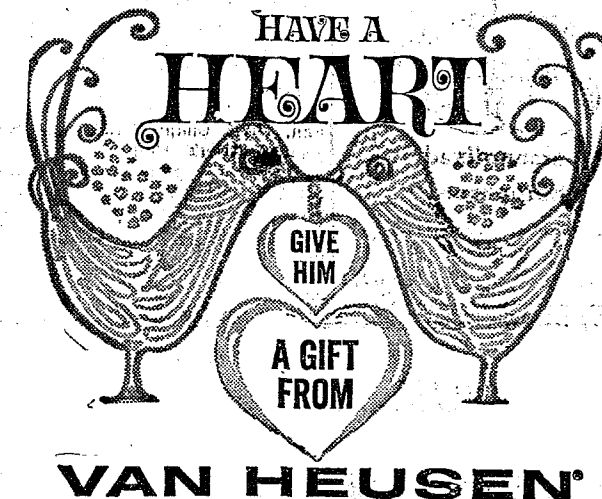
TRUECRAFT FABRICS



SHEERS - PRINTS - PLAINS

Bring window sizes for estimates.

MERKEL  
BEAUTIFUL HOME FURNISHINGS



by VAN HEUSEN

\$7.95 to \$9.00

STRIETER'S MEN'S WEAR  
"The Place To Go For Brands You Know"



## Rebekahs Host Assembly Warden

Chelsea Rebekah Lodge No. 180 held their regular meeting Feb. 2, at 8 p.m. at the hall on S. M-52. Three guests from Harmony Lodge No. 430 of Dexter, and the Warden of the Assembly of Michigan, Mrs. Lorena Knight, from Grand Rapids, were visitors at the meeting.

Many officers were absent due to cold weather and sickness.

Business included the membership, donation to the Washtenaw County Medical Care Facility Fund, and to remember the Adopted Brother residing at the IOOF Home in Jackson. Mrs. Jacques Beyer will take a gift to him before Valentine's Day.

Committee for the Family Supper on Feb. 2 was appointed. Mrs. Dorothy Keezer, Mrs. Jo Hockrein and Mrs. Packard will be chairmen at the supper.

Mrs. Lucille Alstaetter and Mahle Neal were the evening's committee.

PNG Club was announced for Tuesday, Feb. 2, at the home of Mrs. Loydell Keezer, with Mrs. Dorothy Keezer as co-hostess.

Next regular meeting will be held Tuesday, Feb. 16. The District meeting will be held at Home City Lodge in Jackson, March 24. Delegates are Mrs. Phyllis Harok and Miss Nadine Packard.

## Robbins Family Celebrates 3 Birthdays

Four generations of the Robbins family were dinner guests. Sunday afternoon, Feb. 7, at the home of Mr. and Mrs. Robert Robbins, and children Dale, Darlene, Denise, and Duane, of 1225 Gene Dr., to celebrate the Jan. 28 birthdays of three family members. Present at the occasion were William Robbins, Mr. and Mrs. Ralph Rhoades, and daughters, Debra, Barbara, and Julie, all of Rockford, O., and Mr. and Mrs. Boyd Robbins of Chelsea.

Birthdays of William Robbins, and his two great-grandchildren, Dale Robbins and Debra Rhoades were celebrated. The two 18-year-olds were born on Robbins' 75th birthday. He is now 93.

That afternoon, another Robbins daughter, Denise, broke her leg skating with relatives in celebration of her brother's birthday.

weddings by david



personalized photography

Because your wedding is unique.

ann arbor 769-0053



Mrs. Donald O'Dell

## Eastern Stars Plan Reception To Honor Mrs. Donald O'Dell

A reception and dinner honoring Mrs. Donald (Margaret) O'Dell, 551 Glazier Rd., Bell Committee of the Grand Chapter of Michigan, Order of the Eastern Star, will be held Saturday, Feb. 13, at the St. Paul United Church of Christ.

Mrs. O'Dell will be honored at a reception beginning at 5:30 p.m., followed by a dinner at 7 p.m. Guest speaker at the program following the dinner will be Earl J. Hill, public relations representative, Consumers Power Co., Jackson.

Mrs. Robert (Betty) Rudd, president of the Washtenaw County Association, OES, will serve as toastmistress. Mrs. Myrtle Ordway, Grand Organist of the Grand Chapter of Michigan, OES, will provide organ music. Mrs. Frances Strand, Grand Conductress, Grand Chapter of Michigan, OES, will be the soloist. Mrs. Franklin (Dede) Gee will be chaplain.

Tributes for the evening will be from the Grand Chapter of Michigan, OES, Chapter 108, and the Past Master's Club.

Mrs. O'Dell has served her local OES lodge in many positions. She was Worthy Matron in 1969, and held the position of marshal in 1970. She is presently a Color Ray in the lodge, which is because she has to travel so much

with her new position in the Grand Chapter. She is on the lodge's ways and means committee.

In community affairs Mrs. O'Dell has been active on the American Legion Auxiliary. She has been employed at the Chelsea State Bank for a number of years as a teller.

## Fred Bells Observing 50th Anniversary

Mr. and Mrs. Fred Bell, 14147 Trinity Ave., Detroit, will celebrate their 50th wedding anniversary on Feb. 11, at their home. The couple was married Feb. 11, 1921, in Toledo. They lived in Chelsea for most of their married life, moving to Detroit about 15 years ago. They have two children, Fred, Jr., who lives with them, and Mrs. Irvin (Virginia) Rosely, of Pierson; 14 grandchildren and five great-grandchildren.

There will be a party for the couple this summer.

## Home Economics Study Groups Calendar

- Feb. 15—Milan, Mrs. Clayton Symons, 123 E. Michigan, Milan.
- Feb. 16—Fosdick, Mrs. Milton Stemen, 1195 Judd, Saline.
- Feb. 16—Lodi Study Group, Mrs. Laury Herter, 6405 Ellsworth, Ann Arbor.
- Feb. 16—Rogers Corners, Gladys Hines, 2594 Loeffler, Chelsea.
- Feb. 16—York, Mrs. Edna Burchette, 12305 Carpenter, Milan.
- Feb. 16—Model Homemakers, Mrs. E. F. Hellner, 1405 Miller, Ann Arbor.
- Feb. 17—Town and Country, Grace Lindemann, Weber Road, Saline.
- Feb. 17—North Lake, Mrs. Forrest Haskel, 9200 Island Lake, Rd., Dexter.
- Feb. 17—Delhi, Mrs. William Reule, 5216 Pratt, Ann Arbor.
- Feb. 17—Friendly Dames, Mrs. Norman Weidmayer, 4205 Austin, Saline.

Telephone Your Club News To GR 5-3581.

## TIPS for your TOP

from



TODDY and FRAN

Oh, oh. You did it again. Forget to buy a really special valentine for your mother-in-law. Don't panic. She can come in at her leisure when she wants to use it — and she'll think of you fondly on the holiday, the day of her appointment, and every day that it lasts. Maybe you should buy her a permanent and stay in her good graces for a long, long while. It's fine for family relations, being a personalized gift-giver is an art. Make the habit of giving our good services as your good gifts and we'll all be happy.

Magic Mirror Beauty Salon  
Phone 665-0816  
5585 Jackson Rd., Ann Arbor

## Suzann Terns, John W. Messer, Jr., Wed Saturday Before Dist. Judge

Miss Suzann Lynn Terns and John W. Messer, Jr., exchanged wedding vows Saturday morning, Feb. 6, at 11 a.m. in Ypsilanti, before District Court Judge Ark-inson.

The bride is the daughter of Mr. and Mrs. Howard J. Terns, 17551 Grass Lake Rd., Grass Lake. The bridegroom is the former foster son of Mr. and Mrs. Max Kalmbach of Gregory.

For her wedding the bride chose a gown of white silk organza with a lace jacket with pointed cap sleeves. Deep lace cuffs on full-length organza puffed sleeves, and a high lace neck completed the gown, and she wore a mantilla veil which featured a headpiece of white organza roses and illusion. She carried a rose gay style bouquet of white daisies and yellow and white roses, with yellow lace edged streamers.

Miss Sherrie Terns, sister of the bride, attended as maid of honor. She was attired in a gown of deep pink brocade, covered with chiffon over the skirt and sleeves. A narrow band of flowers and pink net complemented her outfit and she carried a bouquet of white carnations and baby pink roses.

For her daughter's wedding Mrs. Terns chose a dress of deep blue lace. She wore a corsage of a single purple orchid.

Richard Salisbury of Grass Lake, attended as best man.

A buffet reception was given following the ceremony from 4 to 8 p.m., at the bride's home, for approximately 90 to 100 guests. Mrs. Robert Kozma, 18136 North

Territorial Rd., and Mrs. Joseph Douglas, 18025 North Territorial Rd., assisted with guests, and pouring. Also assisting at the reception were the bride's sisters, Miss Roben Terns, and Miss Tina Terns; John Terns, and foster brother, her brothers, Michael Lebert, Michael Agopian.

Following a three-day honeymoon at Weber's Inn in Ann Arbor, the newlyweds will reside at the home of the bride's parents, 17551 Grass Lake Rd., suitable apartment can be found.

For her traveling costume the bride chose a lime green and white tweed suit, accented with a corsage of white carnations.

The new Mrs. Messer is presently attending Chelsea High school. Her husband is a 1969 graduate of Stockbridge High school, and is presently employed by Ipsco Co., of Chelsea.

Pre-nuptial activities included a shower hosted by Mrs. Hugh R. Hosier, and her daughter, Bonnie, of 2910 Notten Rd., at the bride's home.

Lunch and punch was served for the bride and a dozen friends.

## VFW Auxiliary Has Five U.S. Flags For Cub Scout Troops

Regular meeting of the VFW Auxiliary Post No. 4076 was held Monday evening, Feb. 8 in the Rebekah Hall with nine members present. A report was given by the hospital chairman, Mary Kniss, on the party given by the Post and Auxiliary at the V A hospital in Ann Arbor, Jan. 27.

Americanism chairman, Eulalie Packard, reported that five flags will be given to the Cub Scout Troops Saturday night at their Blue and Gold dinner, 6:30 p.m. at the Junior High school.

The charter was draped in memory of Viola Czaplina who died Jan. 21.

The assembly was informed that the next Sixth District meeting will be held in Maybee, March 14. All reservations for the dinner should be in by March 7. Anyone wishing to attend is asked to contact President Geraldine Klink.

For the February Social meeting, Bernice Schneider will be chairman, assisted by Lois Speer, Laurita Boyer, and Janice Schneider. It will be held in the Rebekah Hall on Feb. 22.

## SENIOR CITIZENS

Senior Citizens met Thursday, Feb. 4 for a social meeting at the Komer House. Because of the poor weather, only nine members were present. Mrs. Bernice Schneider was hostess for the evening. Cards were played after the meeting.

Birthday pot-luck will be held Thursday, Feb. 18, at 6:30 p.m. for those with birthdays this month. Anna Werner is to be chairman of this event. Her committee will be Emma Seitz and Annette Vail.

## FARM BUYERS

Expansion-minded farmers buy most of farm land in the U.S. In 1969 farmers increased their acreage accounted for 81 percent of land transactions in Northern Plains; 63 percent in Corn Belt; 60 percent in the nation as a whole.

## GO SO Carpet Cleaning

Happy Valentine's Day! Here's a wet weather suggestion for cleaning. We recommend Host, the new method of cleaning carpets without water. The carpet is dry and ready to walk on immediately. Use our Host Electric Up-Brush. It's easy. Clean 40 sq. yds. only \$9.95. Phone for information.

**MERKEL BROTHERS**  
Phone 475-8621



**JULY WEDDING:** Dr. and Mrs. M.S. DeWeese of Columbia, Mo., formerly of Ann Arbor, announce the engagement of their daughter, Dawn Cheryl, to Dudley K. Holmes, Jr., the son of Mr. and Mrs. Dudley K. Holmes of Chelsea. Miss DeWeese is a graduate of the University of Michigan, and teaches in the Ann Arbor Public Schools. Her fiancé is a graduate of Hope College, and is employed by the Chelsea Milling Co. A July wedding is planned.

## IT'S A FACT

Michigan was one of the first states in the nation to enact a "Blue Sky Law" to regulate the sale of stocks, bonds and other securities and to license stockbrokers and salesmen.

## SCHOOL LUNCH MENU

Week of Feb. 15-19

Monday, Feb. 15—Beef stew over biscuits, kale slaw, bread, butter, fruit Jell-O, cookie, and milk.

Tuesday, Feb. 16—Sliced meat on a bun, relishes, tossed salad, potato chips, dish of pineapple, and milk.

Wednesday, Feb. 17—Sloppy Joes, on buns, slice of cheese, potato tots, harvard beets, fruit, caramel coffee cake, and milk.

Thursday, Feb. 18—Fried chicken, potatoes, Jell-O with vegetables, bread, butter, pear half, and milk.

Friday, Feb. 19—Tuna casserole, buttered mixed vegetables, bread, butter, sliced peaches, and milk.

In 1968, spending for both commodities and services totaled \$537 billion, of which \$360 billion, or two-thirds, was spent for items potentially sales taxable.

## U-M Dental Clinic Needs More Patients

Additional adult patients are needed this semester for teeth cleaning at the University of Michigan's School of Dentistry. Persons interested must be 18 years or older, and may apply by calling 764-1544, Monday through Friday, between the hours of 8 to 12 a.m. and 2 to 5 p.m.

## PLAN A CAREER. Take Courses at

Washtenaw Community College



## VILLAGE BEAUTY SALON

LORETTA PANNONE, Owner-Operator  
CINDY - EULA - JANICE - SARA  
107 N. MAIN PHONE 475-5421

**OPEN MONDAY THRU SATURDAY**  
Evenings, Wednesday and Thursday

GOING SOUTH? Face the warmer weather with a light and breezy Florida Shag. Try any of our expert stylists.

## INTRODUCING

## DUTCH-CRAFT

A NEW, MID-PRICED KITCHEN CABINET OF EXCEPTIONAL QUALITY AND DESIGN

★ AVAILABLE IN RAISED-PANEL OR COLONIAL STYLING

★ AND YOUR CHOICE OF FOUR HAND-FINISHES

★ IN SOLID OAK OR MAPLE

DUTCH-CRAFT melds integrity of construction and American-classic designing to give you a working kitchen of quiet charm.

We spent a year looking for DUTCH-CRAFT — you can see it today in a model kitchen

at

CHELSEA LUMBER CO.

## JUST ARRIVED! "EXPECTANTLY YOURS" MATERNITY WEAR

## PATTY ANN SHOPPE

118 SOUTH MAIN

## HOUSE OF ORIENT HAIR STYLING

Introducing Our Newest Hair Stylist



MARGARET BALL

We are happy to have Margaret Ball on our staff with 7 1/2 years experience in all phases of salon styling.

PHONE 475-8196

103 W. MIDDLE ST., CHELSEA

your savings dollars continue to build the community

# mortgage money AVAILABLE

The dollars you save at Ann Arbor Federal Savings primarily go one place...to finance homes in this area. We are specialists! We specialize in savings and home financing. Contact us for Conventional, HUD(FHA), and VA loans.

SINCE 1980

**AAFS**  
the savings specialists

Liberty at Division, West Stadium at Pauline,  
Huron Parkway at Platt, Plymouth at Nixon.

**ANN ARBOR FEDERAL SAVINGS**

Members: Federal Home Loan Bank System • Federal Savings and Loan Insurance Corporation



## Community Calendar

Older Adult Group of the Methodist church, usual pot-luck dinner, Feb. 20, Educational Unit, Methodist church, 12:30 p.m., bring a dish to pass, and own table service.

Father and Son Banquet at Salem Grove church, Saturday evening, Feb. 13. Chicken supper at 7 p.m. Don Turner will show pictures for the program. adv34

Chelsea Camera Club, Tuesday, Feb. 16, 7:30 p.m. at Sylvan Township Hall. Program: movies on Hawaiian vacation by Frank Meriman. Members are to bring slides on pets. Guests welcome.

Past Matrons' pot-luck, Thursday, Feb. 11, 12:30 p.m. at the home of Mrs. Leah Smith, 340 Washington St.

Annual Blue and Gold Dinner of Pack 415, Feb. 14, at 2 p.m., at the Chelsea High school.

Jaycee Auxiliary meeting at the home of Mrs. Joe Verway, Feb. 16, 8 p.m. Surprise Party.

St. Mary's Bake Sale, Saturday, Feb. 13, at Sylvan Township Hall, 10 a.m. until 1 p.m. adv34

Valentine Bake Sale, Saturday, Feb. 13, 10 to 2, Dancer's Store, Benefit the North Lake United Methodist church Organ Fund. adv34

Chicken Dinner, Sunday, Feb. 14, 12 to 4 p.m. Masonic Temple, Dexter. Adults, \$1.75; children, \$1. Sponsored by OES xadv34

Contrary to previous information, there will be a meeting of the Chelsea Band Boosters, Feb. 11, 8 p.m. at the High school band room.

Chelsea Community Farm Bureau Feb. 11, at the Town Hall, pot-luck supper beginning at 1 p.m. Hosts and hostesses: Mr. and Mrs. John Cook, and Mr. and Mrs. George Brettschneider.

Fun Night every Friday night at 7:30 p.m. at Korner House, Main St.

American Legion and Auxiliary hospital equipment available by contacting Loren Keezer at 476-2766 or 475-3431.

TOPS Club at library, Wednesday afternoon group, 12:30 p.m. For information call 426-4543. Thursday evening group, 7 p.m. For information call 475-8720.



Fair Board meeting, Feb. 23, 8 p.m. Sylvan Town Hall. Purpose of the meeting to discuss the proposal of acquiring more land. Public is invited to attend and voice their opinion.

4-H Teen Leaders of Dexter-Chelsea District meet at Kar. Lampe's 8090 Huron St., Dexter, Monday, Feb. 15, 8 p.m. Duncan Sanford, county 4-H agent, will be there to help plan the District Group program.

Esther Chapter of Congregational church meet Thursday, Feb. 18, 8 p.m. at the home of Mrs. Vernon Parks, on Summit St.

Chelsea Rebekah Lodge No. 130 meet Feb. 16 at 8 p.m. at the hall. A family pot-luck supper will be held Feb. 23 at 6:30 p.m.

Stubb Brothers and Karen, at North Sharon Bible church corner of Sylvan and Washburn Rds. Feb. 20, 7:30 p.m. Public is invited.

Jerusalem Farm Bureau Feb. 11, 8:30 p.m. at home of Mr. and Mrs. Irwin Weiss. Brings rolls for refreshments.

Singles, 25 and over, dance and mingle, every Tuesday, 9 p.m., YMCA, Ann Arbor. Live music.

Sewing every Tuesday afternoon at Korner House.

Inquiries regarding the Chelsea blood bank may be directed to Harold Jones in the event that Mrs. Dudley Holmes is unavailable.

Newly organized Dexter-Chelsea La Leche League group open meeting Wednesday, Feb. 17, 8 p.m. at the home of Mrs. John Rinn, 2328 Steinbach Rd., Dexter. Phone 426-8050. La Leche is non-sectarian, non-profit organization currently meeting every third Wednesday of the month. Purpose of the group is to help mothers interested in breast feeding. All women interested in nursing babies are welcome. One need not be pregnant or have a baby to attend. Nursing babies are welcome at meetings. Topic for February: "The Art of Breast Feeding, and Overcoming Difficulties." Discussion leader, Mrs. Dave Catel.

MANY KINDS  
Rice is one of the most popular of all foods. Around the world there are at least 7,000 known varieties of rice.

## St. Paul Youth Group Cagers Meet St. Louis

Sunday, Feb. 7, Senior Youth Fellowship Group from St. Paul church met at St. Louis school with their leaders, Mr. and Mrs. Tim Whitesall, for a basketball game.

Girls from St. Paul's played St. Louis' second string. Winners were the "Gorgeous Girls." For a short time the St. Louis Saints and the St. Louis Roosters were tied, but with great support and Coach Father Umberto's pushing them on, the Roosters were victorious over the Saints with a score 38-38. Bill Robbins was the referee. Father Germano, playing the tape of the rooster's crow, which is the loveable mascot of St. Louis, helped to make it an exciting ball game.

After the game, the Saints and Roosters enjoyed a social hour with the boys, also playing pool and Father Germano taking all the boys and girls for a ride in his amphicat. Refreshments were served and plans for another get-together are being discussed.

In honor of Boy Scout week, the Boy Scouts of Tecumseh came to play a basketball game with the Roosters Monday night with their leader Mr. Wankalburg. Score was Boy Scouts 18, Roosters, 48.

## Active Member of St. Louis School Dies

Word was received at St. Louis school this past week of the death of Mrs. Jodi Vitale, wife of Joseph Vitale, of the Joe Vitale orchestra. Mrs. Vitale has a son at St. Louis school. She had many friends in the community and was a very active member of St. Louis school.

## BIRTHS

A daughter, Gwyn Elaine, Feb. 3, to Sgt. and Mrs. Norman Green, stationed at Ft. Bragg, and Living in Fayetteville, N.C. Maternal grandparents are Mr. and Mrs. Roy Pollard, Gross Lake. Paternal grandparents are Mr. and Mrs. Ed Green of Chelsea.

## On Dean's Honor List

James Keith Boylan, son of Mr. and Mrs. Keith L. Boylan, 245 Park St., made the Dean's List at MacComb County Community College for this past fall term. Boylan is sophomore at MacComb.

## CORRECTION

Paternal grandparents for Timothy Alan Bristle, whose birth was announced last week are Mr. and Mrs. Elmer Bristle.



JUNIOR HIGH SOLOISTS to receive ratings of "T" in the Junior High District Solo and Ensemble Festival held Saturday, Jan. 30 at Schoolcraft Community College in Livonia are, from left, Tom Hafer and Duane Luick. Hafer, who is the son of Mr. and Mrs. John E. Hafer, 8912 Werkner Rd., played a selection on his trombone entitled "Garnet" by Vandercok. Luick, who is the son of Mr. and Mrs. Duane Luick, 12980 Old US-12, played "Serenade" by Bohme on his trumpet.

## CUB SCOUTS...

DEN 1, PACK 415—Den 1, Pack 415 met Feb. 9 at the home of their den mother,

Mrs. George Atkinson, at Cavanaugh Lake. The Cubs finished their place cards and table decorations for the Blue and Gold Banquet, which will be held Sunday, Feb. 14, at 2 p.m. Barry Hinz joined the den today. Bryan Heirick, scribe.

## License Plates Will Be Sold In Both Dexter, Manchester

The Chelsea Branch of the Secretary of State will be traveling to Dexter and Manchester on the annual Community Service program.

The program is provided for the convenience of residents in areas where there are no branch offices, and according to the Chelsea Branch Manager, Wallace Wood, all types of license plates will be issued.

In order to speed up the service, Wood has asked that the vehicle owners be sure to sign

the back of the registration forms in the three places, as indicated by the "x" marks before applying for plates.

Dates for this year will be: Tirb Chevrolet Co., Manchester, on Feb. 27; Frank Grohs Chevrolet, Dexter, on March 6; Tom Marshall Ford, Manchester, on March 18.

Plates will be processed from 1 p.m. to 4 p.m. on each of these days.

## Cub Scouts...

DEN 5, PACK 415—

Den 5, Pack 415 met Tuesday, Feb. 9 at the home of Mrs. Richard Seyfried. The boys opened the meeting with a song. More plans were made for the Blue and Gold Banquet.

The boys played the game "Hot Potato." Meeting closed with the living circle.

Treats were furnished by David Seyfried.

Kelly Kriger, scribe.

## Correction...

Last week's story of the Junior High school District Solo and Ensemble Festival at Schoolcraft held several mistakes. The fourth paragraph in that story should have read: "The only two students who played solos in the contest, to receive a rating of 'T' were Tom Hafer, and Duane Luick. Hafer played a trombone solo, and Luick played trumpet."



## CLARK BUSHNELL FLOOR COVERING SERVICE

Linoleum - Tile  
Kitchen Carpet  
Sales & Installation

For Samples and Free Estimates  
CALL CHELSEA  
475-7180

# FACTORY-SPONSORED Magnavox ANNUAL SALE

## SAVE \$50

### COLOR STEREO THEATRES

in magnificent space-saving ARMOIRES

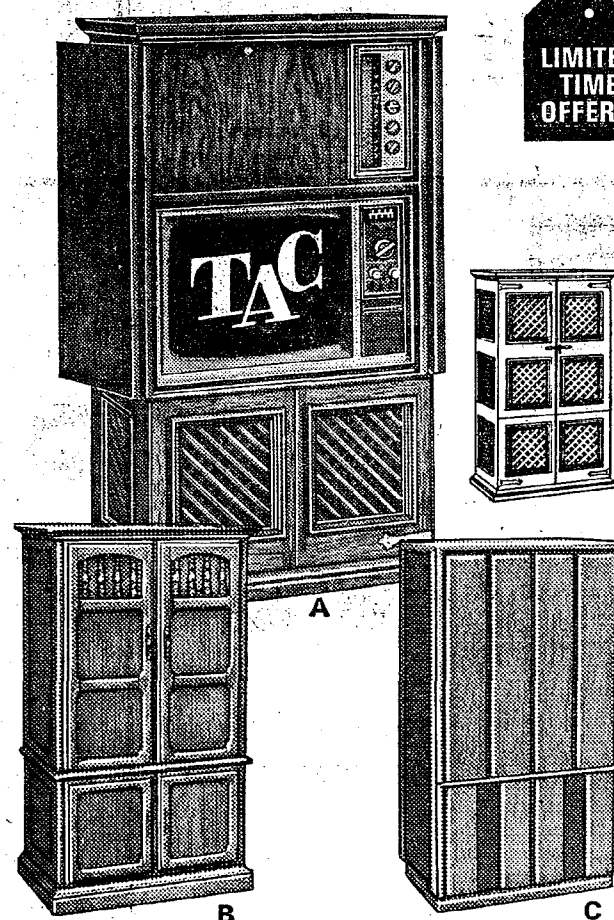
- NEW Total Automatic Color
- NEW Ultra-Rectangular Screen
- NEW Ultra-Bright Tube

Superb color viewing... spectacular stereo listening—are yours to enjoy with these outstanding Magnavox values! Each has amazing TAC that always remembers to keep flesh tones natural, pictures sharp—automatically—even if you switch channels, or if the scene changes! The 21" diagonal screen has square corners and a flat surface for clearer, sharper 226 sq. in. pictures with less glare... plus wonderful realism. And—each has a solid-state Stereo FM/AM Radio-Phono system with 20-Watts EIA music power, two High-Efficiency 12" Bass Woofers, two 1,000 cycle Exponential Horns, plus pull-out Micromatic Player that lets your records last a lifetime: **A.** Mediterranean styling—model 7826 (also shown closed). **B.** Early American—model 7824. **C.** Contemporary—model 7822. Come in today... and enjoy big savings!

YOUR  
CHOICE  
NOW  
ONLY

## \$848<sup>50</sup>

Other Magnavox Stereo Theatres now from \$699<sup>50</sup>



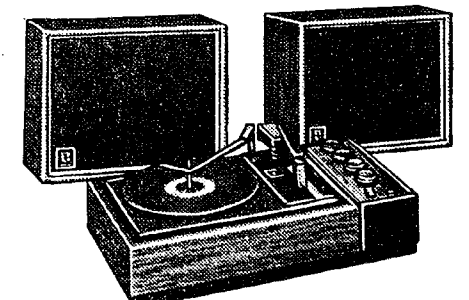
Enjoy 23" Ultra-Bright diagonal screen—plus these other outstanding features: Chromatone for added picture depth and richer colors, Quick-On 295 sq. in. pictures, Bonded Circuitry chassis with 3 I.F. Stages and Keyed AGC for superior reception and lasting reliability. Model 7100—truly a great Magnavox Special!

SAVE  
\$70  
on this  
BIG  
SCREEN  
COLOR  
TV

NOW ONLY  
\$399<sup>50</sup>

SAVE  
UP TO  
\$150

See almost 200 Annual Sale values: Color Stereo Theatres, Color Consoles, Stereo Consoles and Component Systems, Radios, Tape Recorders and Monochrome TV—all priced to save you money!



SAVE \$10  
NOW ONLY \$89<sup>90</sup>

Compact Stereo Phonograph Component System—solid-state model 9280 sounds so big, yet costs so little! It has continuously variable bass and treble controls, two 6" extended-range speakers, new Magnavox Micro-Cut turntable with 8" turntable and protective plastic dust cover. A great value! See it today!

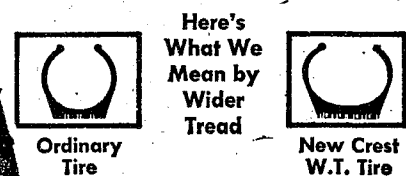
## GAMBLES

### CLOSE OUT

## CREST W.T. WIDER TREAD WINTER TIRE

GUARANTEED 4  
FULL WINTER SEASONS  
AGAINST WEAROUT!

UP TO 7.4" TREAD WIDTH



Here's  
What We  
Mean by  
Wider  
Tread

As Low As  
**\$17<sup>69</sup>**  
7.75 x 14

Here it is... our full 4-ply nylon cord Crest W.T. beefed up and built rugged to take you through winter driving safely, surely. Deep zig-zag, self-cleaning tread for road-gripping traction. Get 'em today! 2-914, ETC.

TIRE SIZE	REPLACES	PRICE	Plus F.E.T.
F70-14	7.75 x 14	\$17.69	\$2.59
G70-14	8.25 x 14	\$19.20	\$2.75
H70-14	8.55 x 14	\$20.45	\$2.95
G70-15	8.15 x 15	\$19.20	\$2.82

FREE INSTALLATION!

SHOP NOW and SAVE  
INVENTORY CLOSE-OUT

SAVE \$12<sup>00</sup> Per Pair!

# HEYDLAUFF'S

113 North Main St., Chelsea (Formerly Frigid Products)

Phone GR 9-6651



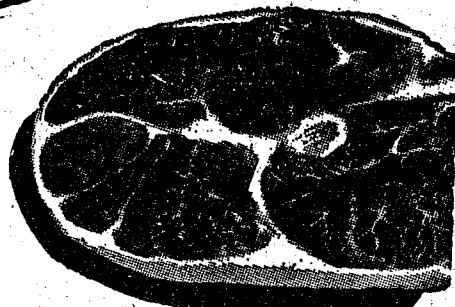
The Supermarket That's Just a Little Bit Better

# Stop & Shop

14901 Old U.S.-12  
Corner at M-52  
Chelsea



Prices effective Wednesday, February 10, 1971  
through Tuesday, February 16, 1971.



Morrell's Vacuum Packed

**Bacon** . . . 1-Lb. Layer **63¢ lb.**

Tender, Delicious

**Cube Steaks** . . . **\$1.19 lb.**

"Triple R Farms" U.S.D.A. Choice

**Chuck Steaks** . . . **79¢ lb.**

"Triple R Farms" U.S.D.A. Choice

**Sirloin Steak** . . . **\$1.29 lb.**

Morrell's Vacuum Packed

**Wieners** . . . 1-Lb. Pkg. **59¢ lb.**

Stop & Shop's Fresh, Lean, All American Beef

**Hamburger** . . . 5-Lb. Units or More **59¢ lb.**

**BONUS SPECIAL**

Shamrock Grade A

**LARGE EGGS**

1 Doz. **39¢**

**BONUS SPECIAL**

Domino

**SUGAR**

10X 1-Lb. Box **14¢**

**BONUS SPECIAL**

Dole

**Pineapple - Grapefruit JUICE**

46-Oz. Can **23¢**

**YOU SAVE MORE**

with our

**MINI-PRICING**

and

**Bonus Special**

**BONUS SPECIAL**

Northern

**TOWELS**

Jumbo Asst. Colors **28¢**

**Farm Fresh Produce**

Florida Juice

**ORANGES** . . . . . 5-Lb. Bag **59¢**

California

**CARROTS** . . . . . Pkg. **10¢**

**YELLOW ONIONS** . . . . . 3 lb. **29¢**

**TRAY TOMATOES** . . . . . 12-Oz. Pkg. **29¢**

"Triple R Farms" U.S.D.A. Choice Boneless

**ROUND STEAK** **\$1.09 lb.**

"Triple R Farms" U.S.D.A. Choice GROUND

**Round Steak** . . . **99¢ lb.**

"Triple R Farms" U.S.D.A. Choice

**Boneless Rolled Rump or Sirloin Tip Roast** . . **\$1.29 lb.**

"Triple R Farms" Semi-Boneless Fully Cooked Whole or Half

**Hams** . . . . . **69¢ lb.**

"Triple R Farms" Mich. Grade 1 Plain or Garlic

**Ring Bologna** . . **59¢ lb.**

Stop and Shop Homemade

**Pork Sausage** . . . **79¢ lb.**

WE RESERVE THE RIGHT TO LIMIT QUANTITIES

For Your Convenience  
**OPEN SUNDAY**  
10 a.m. - 4 p.m.  
All Sale Prices Effective Sundays

Sorry, No Sales To Dealers

**STORE HOURS:**  
Monday, Tuesday, Wednesday  
9 a.m. - 6 p.m.  
Thursday, Friday  
9 a.m. - 9 p.m.  
SATURDAY  
9 a.m. to 6 p.m.  
SUNDAY  
10 a.m. to 4 p.m.

**BONUS SPECIAL**

Breast O' Chicken Chunk Style

**TUNA**

6½-Oz. Can **3 for \$1**

**BONUS SPECIAL**

Stop & Shop's Enriched Sliced

**WHITE BREAD**

1-Lb., 4-OZ. Loaf **5 for 93¢**

**BONUS SPECIAL**

McDonald's Low Fat or

**HOMOGENIZED MILK**

Gallon Carton **88¢**

**BONUS SPECIAL**

Meadowdale Fresh Frozen

**ORANGE JUICE**

6-Oz. Can **9¢**

**BONUS SPECIAL**

Planter Creamy

**Peanut Butter**

Big 28-Oz. Jar **66¢**

Second Section

**The Chelsea Standard**

PAGES 9-16

CHELSEA, MICHIGAN, THURSDAY, FEBRUARY 11, 1971



**CRAFT WORK DISPLAY:** Miss Myrtle Blake displays the many lovely items produced by residents at the Chelsea Methodist Home, which will be sold during the Sewing-Crafts room Open House on Feb. 13, from 2-4 p.m. The rooms are located on the ground floor of the "M" building. They are open every week-day morning for use by the residents at the Home. All proceeds of the sale will go to Church World Service for use by the missions.



QUILTING is a favorite past-time in the Sewing Room of the Methodist Home. Displaying one of the many patchwork quilts produced in the room are from left, Mrs. Freda Sutton, Mrs. Edna Schwab, and Mrs. Winifred Coffron. Mrs. Sutton and Mrs. Schwab are co-chairmen of the sewing committee. Formerly known as the Mission Room, the room goes to the Church World Service to help in their mission work. Money from quilts such as these sold during the Open House will be sent to CWS, while those quilts not sold will be packed and sent for use in missions. Both the sewing and the crafts rooms are open every week-day morning for use by Home residents.

## Open House in Methodist Home Crafts This Saturday

An Open House at the Chelsea Methodist Home's sewing and handicrafts rooms is scheduled for Saturday afternoon, Feb. 13. Commencing at 2 p.m. and continuing until 4 p.m., residents and friends of the Home are invited to visit the rooms, which are located on the ground floor of the "M" building, to view the many facilities for handicrafts that are available to Chelsea Home residents. Also on display at the Open House will be the products made in the rooms. Quilts, ceramic pieces, plastic flowers, aprons, and many other handicrafts

made by the busy residents at the home, will be available for purchase at that time, spokesmen at the Home indicate. Proceeds from the sale of the quilts and other handicrafts will be sent to Church World Service to aid mission work. All quilts and clothing not sold at the sale, will be sent to be given to the mission, officials commented. Mrs. Evelyn Pannone is the staff person in charge of the sewing and crafts program. Mrs. Freda Sutton and Mrs. Edna Schwab are co-chairmen of the sewing committee. A crafts com-

mittee composed of Mrs. Pannone, Mrs. Jordan, Miss Hieber, and Mr. Appling provides leadership in that area. Other activities in the sewing room, aside from quilt making, include the production of lap robes, wheelchair ties, and mending for the Health Care Center. Pot holders and dishcloths are made for the kitchen and laundry bags are made for the residents. Refreshments will be served in the recreation area adjacent to the Sewing-Crafts room during the open house. All Chelsea residents are invited to attend.

## DON TURNER TRAVELOGUE

**TWO BIG SHOWS:**

**SATURDAY, MARCH 6**

**"NORTH TO ALASKA"**

**SATURDAY, APRIL 3**

**"CANADIAN ROCKIES"**

CHELSEA HIGH SCHOOL AUDITORIUM - 8 p.m.

**BOTH SHOWS for only \$3.00**

Tickets available at Chelsea Lumber Co., Chelsea Drug Store, Wallace Wood Insurance, Chelsea State Bank or from any Kiwanis Club member.









# BOWLING NEWS



## Chelsea Nite Owl League

Standings As of Feb. 8

	W	L
Steele's Heating	57 1/2	30 1/2
Mid-State Finance	51 1/2	37
Foster's Men's Wear	57 1/2	30 1/2
Cavanaugh Lake Store	51 1/2	37
Heller Electric	45	43
Smith's AAA	45	43
Pump & Pantry	43	45
Waterloo	41	47
Jack & Son Barbers	35	53
Wahl's Arco Sparks	34	54
McCalla Mobile Feeds	33	51
The Profs	31	53

500 series: T. Steele, 599; H. Pennington, 574; W. Wood, 535; E. Green, 534; R. Foster, 527; J. Stoffer, 516; R. Green, 516; E. Heller, 510; J. Gaken, 503; D. Alexander, 500; G. Zander, 500. 200 games: H. Pennington, 224; E. Heller, 224; M. Packard, 217; T. Steele, 217; R. Green, 208; E. Green, 202.

## Hi-Point Mixed League

Standings as of Feb. 9

	W	L
Holy Terrors	507	321
Hi Steppers	441	387
Dreadnaughts	395	433
Turn Abouts	383	445
Johnston & Johnston	383	445
M. J. H.	376	453

Men, over 450 series: D. Johnston, 461; T. Rumler, 457. Men, over 180 games: D. Johnston, 187; R. Rumler, 161. Women, over 425 series: C. Klapperich, 470; R. Rumler, 457; D. Collins, 437; M. Morton, 434; G. DeSmith, 437. Women, over 150 games: C. Klapperich, 165, 200; D. Collins, 192; R. Rumler, 161, 154; B. Barth, 153; M. Morton, 155; G. DeSmith, 153, 178.

## Charlie Brown & Snoopy's Friends Prep Division

Standings as of Feb. 6

	W	L
The Bully Brothers	51	12 1/2
The Pin Fighters	48 1/2	14 1/2
The Pink Panthers	42 1/2	20 1/2
The Good Guys	34	29
The Strikers	31 1/2	31 1/2
The Partridge Family	31	32
Competitors	28 1/2	34 1/2
Tremendous Strikers	27	36
Creamators	23	40
Red Barons	21 1/2	41 1/2
Groovy Fruit Tooties	20 1/2	42 1/2
The Brains	19	44

Games of 100 or over: J. Alexander, 111; J. Spaulding, 115; D. Craft, 155, 179; M. Fahrner, 142; K. Milliken, 129; B. Lovely, 110; G. Guenther, 111; M. Bowen, 129; B. Lewis, 126; O. Sannes, 113, 126; B. Bennett, 100; M. Boyer, 105; M. Seyfried, 108, 123; R. Weiner, 113, 115; A. Kalishek, 111, 114; J. Headrick, 119; J. Sweet, 100; S. Lyerla, 114, 138; J. Elliott, 110, 104; D. Alber, 163, 201; M. Foster, 103, 123; S. Bowen, 110, 154; J. Boyer, 109, 111; J. Collins, 140, 123; M. Burnett, 112, 141; S. Smyth, 107; D. Eisele, 109; K. Mshar, 155; D. Thompson, 102, 120; C. Fredly, 119; P. Greenleaf, 125, 140; D. Alexander, 102; D. Craft, 121.

Series of 200 or over: J. Alexander, 205; J. Spaulding, 214; D. Craft, 334; M. Fahrner, 226; B. Lovely, 203; G. Guenther, 200; M. Bowen, 224; B. Lewis, 208; C. Sannes, 239; M. Seyfried, 230; R. Weiner, 226; A. Kalishek, 225; J. Headrick, 202; S. Lyerla, 249; J. Elliott, 214; D. Alber, 369; M. Foster, 232; S. Bowen, 264; J. Boyer, 220; J. Collins, 268; M. Burnett, 253; K. Mshar, 242; D. Thompson, 222; C. Fredly, 207; P. Greenleaf, 265; D. Craft, 213.

In Michigan you are never more than six miles from a lake or stream.

## Senior House League

Standings as of Feb. 8

	W	L
Chelsea Cleaners	61	27
Sam's Barbers	60	28
Seitz's Tavern	46	42
Wolverine Tavern	45	43
Sylvan Center	44	44
Schneider's Grocery	44	44
The Pub Bar	44	44
Dana No. 2	43	45
Spaulding Chevrolet	42	46
Dana No. 1	35	53
Chelsea Grinding	32	56
Murphy's Barber Shop	32	56

600 series: C. Gounds, 686; H. Burnett, 642; A. Fletcher, 609. 500 series: L. Hess, 582; D. Clark, 576; O. Johnson, 572; C. Young, 559; J. Collins, 555; R. Knickerbocker, 552; D. Weatherwax, 551; E. Harook, 547; D. White, 546; A. Sannes, 547; J. Myers, 544; G. Burnett, 535; G. Knickerbocker, 535; R. Bauer, 529; W. Moats, 525; R. Packard, 521; W. Cruise, 513; J. P. Jones, 516; G. Lawrence, 516; D. Hatley, 516; C. Balze, 510; S. Haydock, 510; V. Hatley, 509; C. LaRoe, 509; G. M. Attee, 504; R. Spaulding, 504; J. Warmingham, 503; T. McClure, 502; S. Hopkins, 501; F. Dickinson, 501. 200 games: C. Gounds, 224; T. 238, 249; A. Fletcher, 236; H. Burnett, 224, 227; D. Bauer, 238; D. Clark, 211; R. Knickerbocker, 211; J. Myers, 211; C. Young, 208; J. Collins, 209; E. Harook, 206; G. Knickerbocker, 205; A. Sannes, 203; D. Mshar, 202; O. Johnson, 202; D. Hatley, 200.

## Junior House League

Standings as of Feb. 4

	W	L
The Pub	92	48
Chelsea Drug	91	49
Inverness Inn	89	51
J & S Tool	86	54
Smith's AAA Service	71	69
Boyer Automotive	70	70
Jiffy Mix	62	78
Gambles	60	80
3D Sales & Service	60	80
Wolverine No. 2	55	85
Palmer T-Birds	55	85
Wolverine No. 1	49	91

Over 200 games: G. Burnett, 222; J. Toma, 222, 233; R. Kyte, 211; A. Fletcher, 203; T. Dittmar, 247, 214; C. Koengeter, 215; J. Hughes, 212; L. Hughes, 243; D. Buku, 236; E. Buku, 202; D. Eder, 213, 204; J. Popovich, 211; A. Schiller, 223; S. Policht, 215; O. Johnson, 215, 218; J. Fortner, 222; S. Hopkins, 226. Over 600 series: J. Toma, 646; J. Eder, 604; O. Johnson, 614. Over 500 series: G. Burnett, 581; A. Clemes, 501; R. Kyte, 557; R. Pike, 513; A. Fletcher, 525; N. Packard, 538; T. Dittmar, 598; C. Koengeter, 521; K. Norris, 505; R. Prater, 500; F. Dickinson, 507; P. Boham, 520; J. Hughes, 598; L. Hughes, 579; D. Buku, 545; E. Buku, 560; D. Scott, 512; A. Peterson, 539; J. Popovich, 545; M. Sweet, 535; B. Yocum, 536; A. Schiller, 554; R. Erskine, 537; S. Policht, 530; B. Johnson, 580; J. Fortner, 554; J. Harook, 547; G. Weir, 509; S. Hopkins, 597.

## Do Something About League

Standings as of Feb. 9

	W	L
The Abolitions	109	45
The Pushers	92	62
The Vandals	83	71
The Revoltionist	71 1/2	82 1/2
The Environment	62 1/2	91 1/2
The Cridge	44	110

Games Ind. with 190 and over: N. Packard, 202; D. White, 190; T. Steele, 195; D. Alexander, 196; T. Tuttle, 191, 194. Series of 525 and over: N. Packard, 543; D. White, 529; T. Steele, 531; T. Tuttle, 554.

## Chelsea Suburban

Standings as of Feb. 3

	W	L
Dancer's	58	34
Foor Mobil	56 1/2	35 1/2
Dairy Queen Braziers	54 1/2	37 1/2
State Farm	51	41
Chelsea Lanes	50 1/2	41 1/2
Dana Corp.	47	45
G. A. Sales	45	47
Artex Roll-Ons	44	48
Waterloo Garage	40 1/2	51 1/2
Chelsea State Bank	39	53
Patty Ann	37	55
Pittsfield Plastics	29	63

150 games and over: M. DeLaTorre, 175; D. Sannes, 171; M. Abdon, 179, 167; P. Harook, 150; D. Kinsey, 163; G. DeSmith, 157; B. Hatley, 182, 166; M. Brietenwischer, 169; M. Neal, 161; R. West, 151; R. McGibney, 176; V. Stewart, 155, 158; M. L. Westcott, 168; E. Yocum, 157; A. Hocking, 154; B. Beeman, 158; L. Beeman, 151, 170; J. Buku, 179; N. Collins, 154, 205, 163; L. Jarvis, 178, 178, 173; D. Keezer, 166, 160; N. Packard, 158; B. Smith, 173, 153; N. Prater, 173; D. Cozens, 173; M. Olson, 168; R. Klink, 159; J. Proctor, 159; R. Musbach, 174; B. Eder, 156, 155; S. Bowen, 166, 155; K. Snyder, 179; S. Taylor, 164; J. Fitzsimmons, 189.

425 series and over: J. Fitzsimmons, 441; B. Eder, 449; S. Bowen, 465; J. Buku, 445; N. Collins, 627; L. Jarvis, 529; D. Keezer, 466; N. Packard, 453; B. Smith, 466; D. Cozens, 439; E. Yocum, 434; L. Beeman, 452; B. Hatley, 491; M. Brietenwischer, 439; R. McGibney, 454; V. Stewart, 444; M. L. Westcott, 447; M. DeLaTorre, 458; D. Sannes, 455; M. Abdon, 493; D. Kinsey, 460; G. DeSmith, 437.

## Rolling Pin League

Standings as of Feb. 9

	W	L
Spooners	56 1/2	31 1/2
Egg Beaters	52	36
Coffee Cups	51	37
Grinders	49	39
Kookie Kutters	48 1/2	39 1/2
Kitchen Kapers	48	40
Pots	42	46
Moppper Uppers	41	47
Mixers	38	50
Brooms	38	50
Dish Rags	35	53
Jolly Mops	29	58

400 and over series: D. Kinsey, 414; P. Borders, 462; S. Parker, 484; D. Dirlam, 469; K. Del Prete, 460; T. Steinaway, 445; J. Freeman, 407; C. Shepherd, 415; J. Shepherd, 433; E. Williams, 426; L. Orlowski, 456; W. Landwehr, 447; J. Rabbit, 498; L. Keezer, 408; J. Myers, 433; P. Harook, 453.

140 and over games: K. Bretschneider, 149; Polly Patterson, 143; D. Kinsey, 153; P. Borders, 173, 160; S. Parker, 176, 182; D. Dirlam, 152, 183; K. Del Prete, 165, 149, 146; A. McGinn, 156; G. Blaess, 144, 148; V. McNutt, 153; T. Steinaway, 156, 151; J. Freeman, 141; C. Shepherd, 141, 142; J. Pax, 149; J. Shepherd, 160; E. Williams, 162, 148; L. Orlowski, 163, 146, 147; W. Landwehr, 165, 151; G. Brier, 140; J. Rabbit, 147, 173, 178; J. Keezer, 154; J. Myers, 140, 168; E. Miller, 141; P. Harook, 157, 174.

Splits converted: D. Keezer, 3-10; P. Harook, 3-10; J. Edick, 5-10; M. R. Cook, 3-10; W. Landwehr, 6-7; E. Williams, 3-10; L. Orlowski, 3-10; A. Roy, 4-5; D. Anderson, 5-7; D. Scott, 5-10; S. Parker, 5-7; D. Kinsey, 6-10.

## Leisure Time League

Standings As of Feb. 9

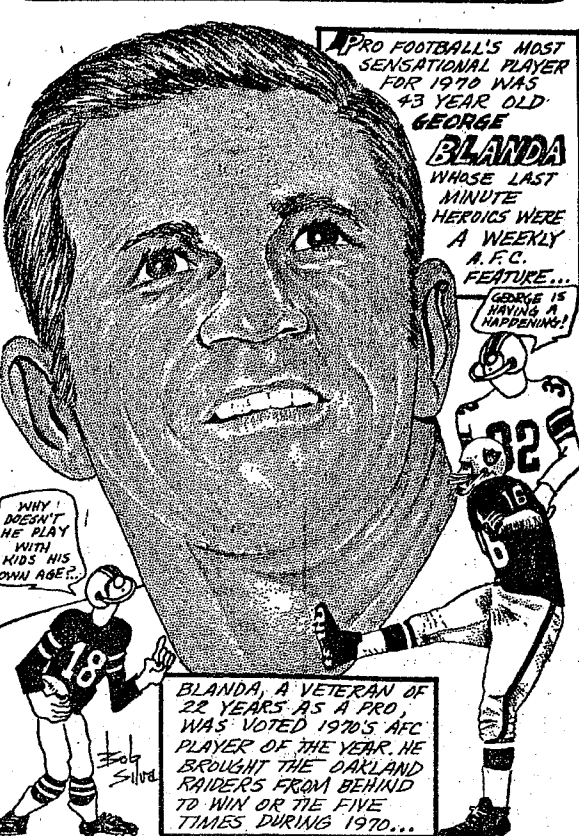
	W	L
Dead Balls	42 1/2	21 1/2
Three Misses	37 1/2	26 1/2
Throw Outs	32 1/2	31 1/2
Gutter Cats	31	33
Rug Rats	26	38
Bowling Bags	22 1/2	41 1/2

400 series and over: P. Huston, 491; P. Elliott, 454; S. Ringe, 441; K. Weinberg, 475; S. Weston, 409; J. Carpenter, 405.

140 games and over: S. Ringe, 172; K. Weinberg, 141, 165, 169; G. Greenleaf, 151; P. Huston, 147, 179, 165; P. Elliott, 142, 165, 147; V. Wheaton, 146; J. Carpenter, 150, 145.

Michigan is the hub of the rich Great Lakes industrial market area. More than 70 million consumers are within 500 miles of Michigan's capital.

# SPORTS CORNER



Standard Ads Are a Good Shopping Guide!

## Old Timers Bowling League

Standings as of Feb. 6

	W	L
Sportsman's Bar	57 1/2	34 1/2
Sanford Security Ser.	56	36
Nelson Realtors	55 1/2	36 1/2
Hotel Service	53	39
Cloverleaf Lanes	53	39
Bob & Otto	50 1/2	41 1/2
Colonial Lanes	49 1/2	42 1/2
Has Beens	46 1/2	45 1/2
Team No. 16	45 1/2	46 1/2
Dexter Bowl Bar	44	48
Stein & Goetz	43 1/2	49 1/2
Team No. 14	39 1/2	52 1/2
Lucky 13	37	55
Mather Co.	36	56
Merkel Furniture	36	56
Hartman Ins.	33	66

High team game and series: Bob & Otto Standard, 948 and 2,567.

High ind. game and series: E. Armbruster, 256 and 598. Other 200 games, 590 series and over: J. Otto, 211, 536; H. Vick, 205, 577; W. Holcombe, 203; R. Exelby, 557; R. Thayer, 532; J. Zucco, 532; A. Robinett, 514; W. Hayhow, 200.

## Chelsea Women's League

Standings as of Feb. 5

	W	L
Chelsea Milling	57 1/2	20 1/2
Jiffy Mixes	59	29
Foster's	49	39
Chelsea Lanes	49	39
The Pub	46	42
The Ugly Ducklings	45	43
Wolverine Bar	45	43
Parish's Cleaners	43 1/2	44 1/2
Chelsea Grinding	38	50
N. American Rockwell	36	52
Norris Electric	27	61
Schneider's Grocery	23	65

450 series or over: L. Orlowski, 525; N. Kern, 524; H. Morgan, 496; A. Alexander, 492; R. Hummel, 492; D. Fouty, 487; A. Boham, 484; D. Verwey, 483; D. Alber, 481; D. Eisenbeiser, 468; S. Klink, 466; P. Guest, 458; G. Kuhl, 457; P. Wurster, 450.

150 games or over: L. Orlowski, 179, 163, 183; N. Kern, 196, 175, 153; H. Morgan, 168, 150, 178; A. Alexander, 163, 198; R. Hummel, 167, 159, 166; D. Fouty, 195, 167; A. Boham, 165, 161, 158; D. Verwey, 186, 160; D. Alber, 186, 159; D. Eisenbeiser, 167, 152, 159; S. Klink, 168, 160; P. Guest, 168; G. Kuhl, 175; P. Wurster, 181; K. Chapman, 166; S. Mahaney, 164, 151; B. Mshar, 161, 160; A. Knickerbocker, 152; B. Rush, 152; A. Fahrner, 170; J. Rowe, 150; D. Montgomery, 165; P. Shoemaker, 175; F. Poertner, 169; M. E. Sutter, 150; C. Newman, 156; J. Harvey, 154, 164; J. Norris, 159.

## Volunteer Orientation Course Set Saturday At Veterans Hospital

The annual Volunteer Orientation Course is to be held at Ann Arbor VA Hospital Saturday, Feb. 20, between the hours of 9 a.m. and 4:30 p.m. This course is offered to all new volunteers and to those regularly scheduled in the form of a refresher course. Voluntary Service is observing 25 years of donated service by its volunteers in 1971 and H. W. Byers, hospital director, is anticipating a large class of new volunteers. Various panels and skits are on the agenda throughout the day with the program being supervised by Harold F. Nordly, director, Voluntary Service.

## Chelsea Lanes Mixed

Standings as of Feb. 5

	W	L
H. & H.	56	54
Chelsea Lanes	54	56
Rabbis & Priests	51	62
Sindlinger & Pierce	76	64
Turner & Johnson	75	65
Fitzsimmons Excavating	72	68
Wolverine No. 2	70	70
Ann Arbor Centerless	69	64
Gephart & Barkley	67	73
Devine & Coppennoll	63	77
Bollinger Sanitation	47	93
Heim & Arrington	43	97

Women's 150 and over: M. Sutter, 198, 167; F. Gephart, 179, 160; L. Gilmore, 176; A. Coppennoll, 174; S. Klink, 187, 173; R. Johnson, 167, 169; V. Harvey, 168; D. Keezer, 167; E. Packard, 166; A. Sindlinger, 164; A. Turner, 161; J. Longworth, 161; M. Heim, 158; J. Rabbit, 158; D. Sannes, 150.

Women's 450 and over: M. Sutter, 500; R. Johnson, 491; S. Klink, 463; L. Gilmore, 455.

Men's 175 and over: O. Johnson, 268, 173, 181; D. Longworth, 216; R. Morgan, 210; J. Turner, 182, 201; M. Packard, 201; A. Sannes, 198; F. Barkley, 195; R. Kiel, 176, 182, 194; B. Devine, 188; E. Greenleaf, 182; G. Heim, 179; E. Keezer, 178.

### EDUCATION IS OUR BUSINESS

Try It!

WASHTENAW COMMUNITY COLLEGE

# NEW CHRYSLER ROYAL IS PRICED LOWER THAN BUICK

YOU BETTER BELIEVE IT!

	Royal	LeSabre
Base Car*	\$3696.00	\$3846.00
Air Conditioning	426.10	442.34
Automatic Transmission	240.55	221.76
Power Steering	124.60	Std.
Power Brakes (disc)	76.45	Std.
AM Radio	92.35	88.41
Wheel Covers (lowest priced)	Std.	26.32
Whitewall Tires (lowest priced)	34.45	35.79
Protective Side Molding	Std.	33.68
TOTAL	\$4690.50	\$4694.30
Difference		\$3.80



## THE LANSING REPORT

FROM  
senator  
**GIL BURSLEY**



Two years ago, whipped up by a public concerned with pollution and a need for better recreation facilities, Michigan voters approved two bond issues—one for \$335 million and the other for \$100 million. I strongly supported these programs.

The \$335 million bond issue was designed to provide funds to clean up the state's polluted waters by financing construction of sewage treatment plants and collection systems.

The \$100 million bond issue was designed to provide enlarged and improved recreation facilities throughout the state to meet the growing demands of a populace with increased leisure time, permitting people to spend more time in outdoor activities.

Now, after a rather slow start—due partly to an expensive bond market and partly to normal "growing pains"—both programs are showing signs of good progress.

While only \$95 million of the water bonds and \$31 million of the recreation bonds have been marketed and about \$100 million of the two issues is still unspent, the Department of Natural Resources which handles the programs, reports that demands for the money are increasing rapidly

as more projects are being approved.

One big fly in the ointment has been the failure of the federal government to fulfill its promises of providing matching funds for projects.

This has led to the necessity of state and local governments temporarily providing larger shares of project costs in order to get them off the ground.

This also has led to a situation in which the state's share of the matching funds will run out before long.

Up to Jan. 1 of this year, 202 sewage treatment projects has been approved and \$17,826,355 had been paid out of state bond funds.

Collecting sewer projects had totaled 57 with \$1,115,383 paid out for such projects.

Latest reports on the recreation bond fund show that of the \$30 million allocated to local units of government for 195 approved projects, \$11,785,241 has been authorized.

So far, 446 local project proposals have been received and reviewed by the Department of Natural Resources but 251 of those had been unapproved or rejected as not eligible, or returned for additional information.

State projects totaling \$45 million have been approved and \$8,331,779 has been authorized. Included is \$1,442,500 for fish projects, \$6,006.00 for parks, \$546,200 for forestry and \$336,079 for hunting.

Of the total amount authorized for these projects, \$3,678,464 has been set aside for land acquisition, \$4,396,315 for development and \$257,000 for planning.

Only four state urban projects have been approved so far, with \$6,638,080 authorized out of the \$25 million allocated for this type of work.

Department officials expect to market \$60 million more in water bonds soon. They are hoping for a better rate of interest than the 5.9965 percent they obtained on \$15 million marketed last April and 4.4314 percent on \$50 million marketed last Dec. 7.

Governmental units have had several months to get their project proposals in shape and the next few months should see great progress as state government and local communities join forces to improve our waters and our recreation facilities for the benefit of Michigan residents and the thousands of visitors who come to Michigan every year.

**MONEY START**

The use of coins in trade was begun around 730 B.C., according to Tufts University professor Dr. Miriam S. Balmuth, whose research recently set back the first known appearance of money by 100 years. Dr. Balmuth also disclosed that it was first used in Northern Syria, not Sardis, the area of origin formerly considered.

## The Serviceman's Corner



RONNIE C. BOBBETT

### Grass Lake Youth Completes Air Force Basic Training Course

San Antonio—Airman Ronnie C. Bobbett, son of Mr. and Mrs. Charles R. Bobbett of 500 South St., Grass Lake, Mich., has completed basic training at Lackland AFB, Tex. He has been assigned to Chanute AFB, Ill., for training in the missile electronics field. Airman Bobbett is a 1967 graduate of Grass Lake High school and attended Michigan State University.

### Terry A. Whitesall Aboard Ocean Tug

USS Tatnuck—Navy Fireman Terry A. Whitesall, son of Mr. and Mrs. Robert D. Whitesall of 13393 Noah Rd., Gregory, Mich., is serving aboard the auxiliary ocean tug USS Tatnuck at Bremerton, Wash.

### Manchester Area Youth Promoted with Marines

El Toro, Calif.—Marine Cpl. Ray L. Handy, son of Mr. and Mrs. Leo R. Handy of 13906 Sharon Hollow Rd., Manchester, Mich., was promoted to his present rank while serving at the Marine Corps Air Station, El Toro, Calif.

Livingston county's representative on the Board of Commissioners of the Huron-Clingon Metropolitan Authority is Charles H. Sutton, retired hardware merchant. He is a former mayor of the City of Howell, where he resides.

### MID-STATE FINANCE CORP.

**\$25 to \$1,000**  
**For Any**  
**Worthwhile Purpose**

See or Call  
**FRANK HILL**  
at 475-8631

111 PARK STREET  
CHELSEA, MICH.



PVT. WILLIAM E. DAVIS

### Pvt. William Davis Completes Marine Basic

San Diego, Calif.—Marine Pvt. William E. Davis, son of Mr. and Mrs. Prentiss Davis of 2038 M-52, Chelsea, Mich., was graduated from recruit training at the Marine Corps Recruit Depot, Dan Diego. Davis is a 1970 graduate of Chelsea High school.

The Federal Trade Commission (FTC) uses the words "warranty" and "guarantee" interchangeably. Both specify that the maker will be responsible, in some way, for a specified time for specific repairs or replacement of defective parts.

## 'Operation Hog Lift' Seeks To Boost Price for Farmers

A national program entitled "Operation Hog Lift" has been launched by the National Farmers Organization, NFO, which is designed to raise the price of hogs for the commercial family farm. It was announced this past week. Operation Hog Lift works under the principles of collective bargaining. Working through the national organization, farmer members of NFO are selling their hogs together, as a lump contract, to better the price of hogs.

This program, which has been in progress one month, has already succeeded in raising the price of hogs by \$3 to \$4 per hundredweight, according to Douglas Kennedy, S. M-52, chairman of the Washtenaw County NFO chapter. To do this, collection points for hogs have been increased for the NFO members, while all the hogs are marketed together—decreasing the market places for hogs. Basically, Kennedy said, this has the effect of moving the hogs from the low-price areas to the places where prices are deficient, and can thus claim a higher price.

Local collection for Chelsea area farmers is Tecumseh, Kennedy stated. These hogs are then sold through the national office located in Corning, Ia.

Kennedy estimated that there are more than 100 farmers in Washtenaw county who are members of NFO. He claimed that there are not many hogs produced in this area, but that efforts by the NFO thus far have benefited those members, as well as farmers of other commodities. Accord-

ing to Kennedy, when the price on one commodity rises, it generally rises on accompanying commodities.

### Rep. Sharpe Gets Four Important Committee Posts

State Representative Thomas G. Sharpe (R-Howell) has received an impressive list of committee appointments for the next two years. Sharpe, who is beginning his fifth term in the House of Representatives, was appointed to four committees, the most of any member in the House.

On the important State Affairs committee, Sharpe will serve as Republican vice-chairman. In addition to his previous assignment on the Economic Development Committee, he has been assigned by the speaker to sit on the committees in elections, and house policy.

"Regardless of the work involved in these committee assignments I am happy to be able to serve on all of them. I can only feel that the broader reservoir of knowledge I have in state government, the more effectively I can represent the people of the 51st District. Membership on a committee is an excellent way to become knowledgeable about that area," Sharpe remarked.

Telephone Your Club News  
To GR 5-3581

## CHARM BEAUTY SALON

4396 CLEAR LAKE ROAD  
(Formerly of Grass Lake)

Two Operators - Hair Styling and Wig Service  
Open on Mondays. Closed Tuesdays.

PHONE 475-2700

## Attention, Guys and Gals!

Looking for something special for

### VALENTINE'S DAY?

Give her (or him) a poster or incense.

P.S.—I have black lights, too!



## TAILFEATHER BOUTIQUE

105 N. Main Street, Chelsea  
Phone 475-2512

## VILLAGE CAUCUS

VILLAGE OF CHELSEA  
NOTICE

An Independent Party  
Caucus

WILL BE HELD AT THE  
COUNCIL ROOM  
MUNICIPAL BUILDING

Monday, Feb 15, 1971

at 8:00 O'clock p.m.

to nominate Candidates for Offices  
to be filled at the Annual Village  
Election on March 15, 1971, viz:

Clerk

Two-year term

Three Trustees

Two-year terms

Assessor

One-year term

2 Library Board Trustees

Three-year terms

Richard Harvey

Village Clerk

Dated: January 26, 1971



INVITATIONS or  
ANNOUNCEMENTS...

Let us provide you with the very finest printed or engraved invitations and announcements. Make certain that your wedding stationery is of top quality and conforms to correct social requirements. We can advise you on these important details.

THE CHELSEA STANDARD

Commercial Printing Department

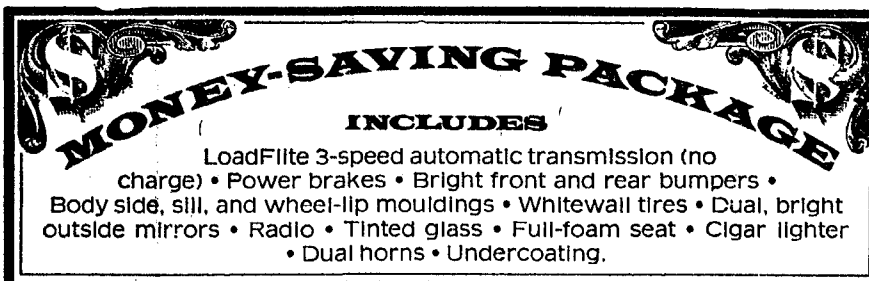
# ONLY

THE GOOD GUYS HAVE IT!  
(THE SWEPTLINE AUTOMATIC)



NO EXTRA  
CHARGE FOR  
**AUTOMATIC  
TRANSMISSION**

Buy this specially equipped Dodge Custom Sweptline pickup, and we'll give you an automatic transmission at no extra cost. You'll get an 8-foot double-wall cargo box, single-latch tailgate, extra cab comfort, plus all the regular features of our tough Custom Sweptline, as well as the additional items listed below. It's a great truck for work or play. Come in now for special savings on our Sweptline Automatic.



**MONEY-SAVING PACKAGE**  
INCLUDES  
LoadFite 3-speed automatic transmission (no charge) • Power brakes • Bright front and rear bumpers • Body side, sill, and wheel-lip moldings • Whitewall tires • Dual, bright outside mirrors • Radio • Tinted glass • Full-foam seat • Cigar lighter • Dual horns • Undercoating.

**Dodge** CHRYSLER  
AUTHORIZED DEALERS



**G. A. SALES & SERVICE, INC.**  
1185 Manchester Road  
Chelsea, Michigan

WE EARN THE NAME "GOOD GUYS" IN SERVICE AS WELL AS THE SHOWROOM





**CHELSEA'S NEWEST BROWNIE TROOP.** Troop 145, which was started Dec. 3, now has 17 members. Following investiture ceremonies held Jan. 21, Brownie ranks swelled by 10 members. The troop now features, front row, from left, Laura Hastings, Diane Thompson, Teresa Degener, Christina Fahrner, Susan Cobb, Nancy Heller, Christina Pax, Felicia Poquette, and Whitney Jones. In the second row are Karen Liebeck, Teresa Hoffman, Valica Pletcher, Debbie Connell, Debbie Kellin, Kelly Headrick, Kim Boyce, and Dawn Connell. Leaders are, third row, Mrs. Douglas Connell, and Mrs. Fred Hoffman.



**BROWNIE STORY** was the theme of the puppet show which Troop 145 presented for mothers and newly-invested Brownies at their investiture ceremonies held Jan. 21 at the Congregational church. Taking part in the presentation were, from left, Kim Boyce, Debbie Kellin, Teresa Hoffman, Valica Pletcher, Debbie Connell, Kelly Headrick, Karen Liebeck, and Dawn Connell. The troop now numbers 17 Brownies.

## New Brownie Troop Organized

Brownie Troop 145, which was officially started on Dec. 3, held investiture Thursday afternoon, Jan. 21, at the First Congregational church. A puppet show was featured at the program, which told the Brownie story.

Following the flag ceremony, 10 new Brownies were invested. Refreshments followed with coffee, punch, and cookies. Cookies were furnished by the mother of the girls.

The newest Chelsea troop meets

weekly on Thursday. Mrs. Douglas Connell is the leader, assisted by Mrs. Fred Hoffman.

At the meeting of Jan. 28, new officers were elected. Treasurers for the troop are Kim Boyce and Kelly Headrick, while scribes are Debbie Connell and Karen Liebeck.

(Dues were collected, and projects for Mother's Day, and Girl Scout week were discussed. The girls played games, and the meeting closed with the playing of taps. Treats were furnished by Whitney Jones, as it was her birthday. Meeting of Feb. 4 was cancelled due to the weather.

Michigan's Upper Peninsula is as big as Connecticut, Delaware, Massachusetts and Rhode Island combined.

## District Court Proceedings

In the 14th District Court this past week, Shaun DeVries, Saline, pled guilty to speeding 65 mph in a 55 mph zone. He paid \$20 fine and costs.

Robert Vincent, Saline, waived examination on a charge of larceny from a building. He was bound over to Circuit Court.

Richard Towner, Ann Arbor, pled guilty to speeding 44 mph in a 25 mph zone. He paid \$28 fine and costs.

William McCalla, Milan, was found guilty of speeding 35 mph in a 25 mph zone. He paid \$20 fine and costs.

Gary Jones, Tipton, pled guilty to creating unnecessary noise. He paid \$10 fine and costs.

Duane Kuebler, Milan, pled guilty to speeding 50 mph in a 25 mph zone. He paid \$20 fine and costs.

Louis Dulong, Saline, pled guilty to driving under the influence of alcohol. He paid \$200 fine and costs, and his driver's license was taken away. He is on one year's probation.

Conrad Cawton, Clinton, pled guilty to having no turn signals. He paid \$25 fine and costs.

Barbara McDermott, Clinton, pled nolo contendere to a charge of speeding. She paid \$15 fine and costs.

Alvin Staebler, Ann Arbor, pled guilty to putting water in meat. He paid \$104 fine and costs.

Donald Adams, Ann Arbor, was found guilty of having no operator's license on his person. He paid \$35 fine and costs.

Carsie Cooper, Indianapolis, Ind., pled guilty to driving across the median. His case was dismissed with payment of \$5.

Earl Richmond, Gregory, pled guilty to having defective lights on his trailer. He paid \$20 fine and costs.

E. J. Carpenter, Ann Arbor, pled guilty to driving on a revoked license. He paid \$50 fine and costs, and must spend three days in jail.

Melvin Hartman, Ann Arbor, was found guilty of driving under the influence of alcohol. He paid \$100 fine and costs.

Richard H. Holcomb, Milan, pled guilty to careless driving. He paid \$50 fine and costs, and must spend five days on the Saline work program. He is also on six months' probation.

Earl Ray Riddle, Grass Lake, pled guilty to using obscene language over the telephone. He will be sentenced on Feb. 23.

Rickey Ledwidge, Dexter, pled guilty to careless driving, for which he paid \$25 fine and costs. He was also sentenced for creating excessive noise, careless driving, and speeding.

For the first count, and \$50 fine and costs for the second, and is on one year's probation.

James Darden, Wayne, pled guilty to driving too fast for conditions. He paid \$15 fine and costs.

John Schumacher, Whitmore Lake, pled guilty to driving without a driver's license on his person. He paid \$15 fine and costs.

Nick Edwards, Whitmore Lake, pled guilty to speeding 80 mph in a 55 mph zone. He paid \$45 fine and costs.

Charles Skodak, Gregory, pled guilty to careless driving, to having no registration on his person, and to having no proof of insurance. He paid \$30 fine and costs for the first count, \$10 fine and costs for the second, and \$10 fine and costs for the third count.

Edward Lovely, 519 Lane St., Chelsea, pled guilty to being a disorderly person. He was placed on the antihouse program, and on one year's probation. He was fined \$150 fines and costs, and was given a suspended sentence of 30 days in jail.

John Wilkinson, Dexter, was found guilty of being intoxicated in a public place. He paid \$50

fine and costs, and is on the Dexter work program. He was also given five days in jail for violation of probation.

Rodney L. Conery, Flint, was found guilty of driving on a suspended license. He was given three days in jail, suspended, and was fined \$50 fine and costs.

Paul Holman, Pinckney, pled guilty to entering a camp ground during prohibited hours. He paid \$25 fine and costs.

Judith M. Perry, Saline, pled guilty to having no operator's license on her person. She paid \$15 fine and costs.

Norman Ottmar, Ann Arbor, pled guilty to having no operator's license on his person. He paid \$10 fine and costs.

Lawrence Maudrie, Ypsilanti, pled guilty to violation of financial responsibility license. He paid \$20 fine and costs.

Michael A. Miller, Manchester, pled guilty to being a minor in possession of alcohol. He paid \$20 fine and costs.

Norman D. Fletcher, 458 North St., Chelsea, pled guilty to operating a snowmobile without registration. He paid \$15 fine and costs.

Leo Lester Ewers, Gregory, pled guilty to driving under the influence of alcohol. He was fined \$100 fine and costs, on penalty of spending 60 days in jail. His license was given to the court.

Evelyn Matthews, Northville, pled guilty to being drunk and disorderly. She paid \$35 fine and costs, or spend 10 days in jail.

Ronald Osborn, Manchester, waived examination on a charge of breaking and entering. He was bound over to Circuit Court.

Lawrence J. Ross, Wayne, entered a plea of nolo contendere to a charge of careless driving. He paid \$35 fine and costs for that charge.

## Crayton Charged with Driving Under Influence Of Liquor After Crash

Chet Crayton, 54, 220 North St., was arrested Tuesday evening, Feb. 2, when he hit a car driven by Debra Marie Paul, 18, of 151 Van Buren St. Crayton turned left in front of Miss Paul, as he was turning from Main St. onto Lincoln. He struck the Paul vehicle head-on, causing much damage to the front of both vehicles, and inflicting back injuries to Miss Paul.

Crayton was charged with driving under the influence of alcohol, and refused to take the breath test. He was arraigned before Judge Deake in the 14th District Court, and pled not guilty. Trial is set for Feb. 24.

A passenger, Sally Daniels, 439 Monroe St., Jackson, was riding with Crayton at the time of the accident.

## Letters to the Editor

To the Editor:

It has been my privilege to attend Washtenaw Community College classes in Chelsea ever since their inception. These credit courses are a privilege. They are within easy driving distance of everyone in the area, and offer an opportunity to many of us who are anxious to further our education. This could be the means by which your drop-out, or late-starter could get the boost he needs to keep going.

From the poor showing last week, the community is allowing these classes to be withdrawn for lack of attendance. This will be a great loss for all of us, and will certainly reflect badly on the community.

Let's show we want and need this branch of Washtenaw by turning out in full force to register. Registration may be completed during class time.

Sylvia Gilbert.

The average supermarket offers 8,000 or more items in attractive packages. Take a shopping list with you. You'll save time and be less tempted to make expensive, impulse purchases.

Retail food prices in 1970 averaged about five percent higher than 1969 price levels.



**HARD AT WORK** in the Crafts Room at Chelsea Methodist Home are, from left, Miss Myrtle Blake of New Hudson; Mrs. Anna Kelch, Warren; and Mrs. Winifred Jordan, Southfield. Mrs. Carl Milliman, resident assistant at the Home, assists the women. The ladies are busy at work preparing

## + AREA DEATHS +

### Mrs. Harold A. Jones Dies Friday at Hospital Following Long Illness

Mrs. Harold A. (Margaret M.) Jones, 68, of 701 Glazier Rd., Cavanaugh Lake, died at St. Joseph Mercy Hospital, Ann Arbor, on Feb. 5, 1971 after a long illness.

She was born in Kittanning, Pa., March 25, 1902, the daughter of Judge Calvin and Margaret McFadden Rayburn.

On July 17, 1924 she was married to Harold A. Jones of Detroit, who survives. Prior to her marriage, Mrs. Jones had been employed by the King-Seely Corp. and the University Hospital in Ann Arbor.

Other survivors in addition to her husband are three children, Eliza McFadden of Cambridge, Mass., Allen Rayburn Jones of Washington, D.C., and Caroline E. Wiley of Petersburg, Va., five grandchildren and numerous nieces and nephews. She was preceded in death by two brothers, James Rayburn of Kittanning, Pa., and Calvin Rayburn of Ann Arbor.

Mrs. Jones was a member of St. Paul's Episcopal Church of Detroit. Private graveside services were held Saturday, Feb. 6 at 2 p.m., followed by burial in Oak Grove Cemetery. The Rev. C. Walton Fitch of St. Barnabas Episcopal church of Chelsea officiated. Arrangements were made by Burghardt Funeral Home.

### Mrs. Ruth Gullett Dies Saturday at Hospital Following Short Illness

Mrs. Ruth Gullett, 552 McKinley St., 52, died Saturday, Feb. 6 at St. Joseph Mercy Hospital after a short illness. Born Nov. 13, 1918 in Sublett, Ky., the daughter of Curtis and Mousie Jackson Vanderpool, she married Lloyd Gullett on Nov. 30, 1935 in Salsbery, Ky. They moved to Chelsea in 1941.

Her husband preceded her in death on Sept. 12, 1965. Mrs. Gullett had been employed in the shoe department of Montgomery Ward and Co., Ann Arbor, for the past 14 years.

She is survived by one son, Carl of Chelsea, a daughter, Mrs. Ronald (Dorothy) Sheeks of Ypsilanti, her mother, Mrs. Lloyd Whitaker of Patterson, O., one brother, Gene Vanderpool of Forde, O., a sister, Mrs. Joe (Frances) Fabo of Clarksville, Tenn.; and three grandchildren. Funeral services were held Tuesday at 2 p.m. from the Staffan Funeral Home in Chelsea. Burial was in Oak Grove Cemetery.

### Rev. Frederick Atkinson Was Pastor of Salem Grove, North Lake Churches

The Rev. Frederick Atkinson, 6720 E. Bourne, Gregory, 67, died Thursday, Feb. 4 following an automobile accident at Jackson. The Rev. Atkinson was the pastor of the North Lake United Methodist church and the Salem Grove United Methodist church.

Born June 12, 1903 in Altoona, Pa., he was the son of William and Lisette Atkinson. He married Bobbie Fitchette June 6, 1952 in Detroit. She survives.

He was a camera man—lithographer by trade, and worked in various positions with the Federal Government for many years. He entered the ministry when he was 61, and served in four churches in southern Illinois prior to his coming to Chelsea in the fall of 1969.

The Rev. Atkinson is survived by his widow, Bobbie, two daughters, Mrs. Keen (Agnes) Hepburn of Haymarket, Va., and Mrs. William (Patricia) Nelson of Washington, D.C., three stepdaughters, Mrs. Ray (Bobbie) Loh Westbrooks of Trenton, Mrs. Tommy (Judy) Nance and Mrs. Richard (Jean) Deskovitz, both of Westland; three sons, Frederick Atkinson, Jr., of McLean, Va., Roderick of Arlington, Va., and Danny at home; nine grandchildren, seven step-grandchildren; four great-grandchildren.

Memorial services will be held at the North Lake United Methodist church on Feb. 14, at 4 p.m. Memorial contributions may be made to a favorite church or charity or to the North Lake United Methodist church or the Salem Grove United Methodist church.

### Miss Ida Emmons Waterloo Area Resident Dies Monday at Medicenter

Miss Ida A. Emmons, of 8667 Munith-Waterloo Rd., Rt. 3, Grass Lake, 79, died Monday evening, Feb. 8, at the Chelsea Medicenter. She was born Oct. 4, 1891, the daughter of George W. and Bertha Hoffman Emmons.

She is survived by one brother, Daniel W. Emmons of the same address. Miss Emmons is at the Caskey Funeral Home in Stockbridge, where services will be held Thursday, (today), Feb. 11 at 2 p.m. with Rev. Altha Barnes officiating. Interment will be Mt. Hope Cemetery, Waterloo.

Stand anywhere in Michigan and you are within 85 miles of one of the Great Lakes.

### Everett E. Young Was Employed in Chelsea As Automobile Mechanic

Everett Erwin Young, of Stockbridge, 57, died Monday morning, Feb. 8, at his home. He was employed at the time of his death, and for the past five years, by Palmer Motor Sales in Chelsea, as a mechanic.

Born Jan. 14, 1914 in Elko, N.Y., the son of Ernest and Mabel Young, he married Julia Hartman of New York State in 1958.

He is survived by his widow Julia, one daughter, Connie, and four sons, Fred, Eric, James, and Todd; three sisters, Mrs. Walter (June) Harris of Chelsea, Mrs. Barbara Solada of Stockton, N.Y., and Mrs. Fern Cutler of Elkhart, Ind.

Funeral services were held at 2 p.m. Wednesday, Feb. 10, at the Caskey Funeral Home, Stockbridge, with the Rev. Raymond Norton officiating. Interment was in Oak Lawn Cemetery, Stockbridge.

### Earl D. Sheridan Witness Minister Known Locally Dies at Rest Home

Earl Daniel Sheridan, 9999 Macdon Rd., Saline, died at Cedar Knoll Rest Home in Grass Lake, Feb. 4. He was born in Seneca, N.Y., Oct. 17, 1890, the son of Frank and Addie Deal Sheridan.

He was a minister of the church of Jehovah Witnesses, and had many acquaintances in this area. He is survived by one daughter, Mrs. Lillian Rapp of Saline.

Mr. Sheridan's body was sent to Waterloo, N.Y., where services were held Sunday, Feb. 7. Local arrangements were by Staffan Funeral Home.

### Mrs. Wilma Briggs Former Saline Resident Dies at Methodist Home

Mrs. Wilma Briggs, Chelsea, Methodist Home, died at the Home, Monday, Feb. 8. She was born Jan. 22, 1894 in Macon, the daughter of Elmer and Minnie Austin Camburn. She came to the Home in December 1963 from Arkona Rd., Saline.

Mrs. Briggs is survived by one daughter, Mrs. William (Mary) Kraft, of Ann Arbor.

Funeral services will be held Thursday, Feb. 11 at the Macon United Methodist church, at 2 p.m. Burial will follow in Macon. Arrangements were by Staffan Funeral Home.

## ASHTON & CO.

STOCKS • BONDS • MUTUAL FUNDS

MEMBER PHILADELPHIA-BALTIMORE-WASHINGTON EXCHANGE

15315 W. McNICHOLS RD.

DETROIT, MICHIGAN 48235

JULIUS BLAESS, Representative

## Good News for Lot Owners

We Can Build This Home on Your Improved Lot for \$21,900.00



- ★ Full Basement
- ★ Carpeting Throughout
- ★ Hotpoint Stove and Refrigerator (included)
- ★ All Aluminum Exterior

- ★ 2-Car Garage
- ★ Storms and Screens
- ★ Your Choice of 100 Plans and Elevations
- ★ Our Property or Yours

## WIN A NEW 1971 CHEVROLET CAMARO!

You may win one of sixteen 1971 Chevrolet Camaros. Nothing to buy! Registration cards are available at our model homes or sales office. Nationwide drawing to be held on Monday, March 15, 1971, according to contest rules.



## W. C. WEBER CONST. CO.

12290 JACKSON RD.

CHELSEA

## MODELS OPEN THIS WEEK-END

Interior Decorating By Mrekel Brothers.

663-1935

13682 Old US-12, 1/2 Mile East of Chelsea  
1:00 p.m. - 5:00 p.m.

475-5964



You and your business could be wiped out... Get **Auto-Owners Multi-Peril Protection**. See your A-O Man.

**A. D. MAYER AGENCY, INC.**

"Your Protection Is Our Business"

115 Park St. Chelsea  
Phone 479-5061

**Auto-Owners INSURANCE COMPANY**

## YOU'LL PROFIT FROM BETTER FEEDS

Extra proteins, vitamins and minerals are scientifically blended to promote your stock's growth and health, and to boost your profits.

Complete feeding rations for all your livestock, poultry

**FARMERS' SUPPLY CO.**

PHONE GR 5-5511

## MILK

Teenagers think that milk tastes "just terrific"

Socializing, alone, or with the gang, anytime is the right time for a teenager to help himself to a delicious glass of healthful milk.



There's a world of health in a glass of milk!

## WEINBERG DAIRY

QUALITY PASTEURIZED DAIRY PRODUCTS

Old US-12

Phone GR 5-5771







[illegible]



